



The Malaysian Economy in Figures 2005

Prepared by
Economic Planning Unit, Prime Minister's Department

Price : RM3.00

Background on Malaysia

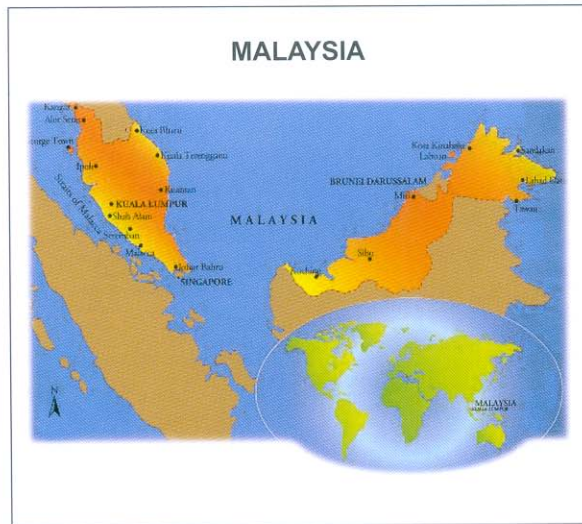
- o Malaysia covers an area of about 330,252 square kilometers, consisting of Peninsular Malaysia (Perlis, Kedah, Pulau Pinang, Perak, Selangor, Negeri Sembilan, Melaka, Johor, Pahang, Terengganu, Kelantan), Sabah and Sarawak in Borneo. Malaysia lies entirely in the equatorial zone and the average daily temperature through out Malaysia varies from 21°C to 32°C.
- o Malaysia is a multi-ethnic country. The principal ethnic groups are Malays, followed by Chinese and Indians. Other significant groups are the indigenous people of Sarawak and Sabah, including the Dayaks, Kadazans, Bajaus, Melanaus and Muruts.
- o Malaysia practices a system of Parliamentary Democracy with Constitutional Monarchy and His Royal Highness is the Paramount Ruler. It has three chambers of administration, namely the Legislative, Judiciary, and Executive.
- o The Malaysian Parliament is made up of the Yang Di-Pertuan Agong, the Senate with 70 members and House of Representatives with 219 members. The general election is held every five years. Since independence, Malaysia has been ruled by the National Front which is a coalition of several political parties.

MALAYSIA : BASIC STATISTICS

	2004 (p)	2005 (f)
Population (million)	25.6	26.1
Labour force (million)	10.6	10.9
Employment (million)	10.2	10.5
Unemployment rate (%)	3.5	3.5
Nominal GNP (RM billion)	423.1	443.9
Nominal GDP (RM billion)	447.5	470.3
Real GDP growth rate (%)	7.1	5.0 ~ 6.0
Per capita income		
RM	16,538	16,987
US\$	4,352	4,470
PPP(US\$)	9,970	10,205
Inflation (% p.a)	1.4	2.5
Merchandise exports (RM billion)	481.2	514.9
Merchandise imports (RM billion)	376.8	400.1
Current account of BOP (% of GNP)	13.4	14.9
Exchange rate (RM/US\$)	3.80	3.80

(p) Preliminary

(f) Forecast



1. KEY ECONOMIC INDICATORS

	Unit	2001		2002		2003		2004 ^(e)		2005 ^(f)	
		RM million	% p.a.	RM million	% p.a.	RM million	% p.a.	RM million	% p.a.	RM million	% p.a.
1.1 Gross Domestic Product (in 1987 constant prices)		211,227	0.3	219,988	4.1	231,674	5.3	248,040	7.1	260,323	5.0-6.0
Agriculture, forestry & fishing		18,551	-0.6	19,036	2.6	20,123	5.7	21,135	5.0	21,836	3.3
Mining		15,160	-1.5	15,774	4.1	16,699	5.9	17,384	4.1	18,250	5.0
Manufacturing		63,299	-5.9	65,872	4.1	78,323	8.3	78,323	9.8	81,882	4.5
Construction		7,108	2.1	7,275	2.3	7,276	1.9	7,276	-1.9	7,205	-1.0
Services		120,194	6.0	127,872	6.4	133,531	4.4	142,433	6.7	150,593	5.7
1.2 Gross National Product (in 1987 constant prices)		193,585	1.2	202,736	4.7	216,478	6.8	232,152	7.2	242,799	4.6
Private consumption		97,630	2.4	101,946	4.4	108,722	6.6	119,681	10.1	129,854	8.5
Private investment		26,120	-19.9	22,181	-15.1	22,270	0.4	25,790	15.8	28,265	9.6
Public consumption		28,007	17.3	31,336	11.9	34,476	10.0	36,746	6.6	38,392	4.5
Public investment		36,930	14.5	41,068	11.2	42,690	3.9	41,206	-3.5	36,411	-11.6
Exports of goods & services		227,685	-7.5	237,904	4.5	253,006	6.3	292,475	15.6	316,216	8.1
Imports of goods & services		203,866	-8.6	216,802	6.3	227,578	5.0	272,720	19.8	287,941	5.6
Per capita GNP	RM	12,855		13,722		14,838		16,538		16,987	
	US\$	3,383		3,611		3,905		4,352		4,470	
			% of GNP		% of GNP		% of GNP		% of GNP		% of GNP
1.3 Balance of Payments											
Goods		69,854	22.6	72,117	21.4	97,701	26.3	104,474	24.7	114,820	25.9
Services & Income		-33,989	-11.0	-31,057	-9.2	-37,553	-10.1	-33,329	-7.9	-34,403	-7.7
Current account balance		27,687	9.0	30,494	9.1	50,848	13.7	56,511	13.4	66,292	14.9
Overall balance		3,662	1.2	14,191	4.2	39,059	10.5	83,061	19.6	-	-
Central Bank reserves		117,203	38.0	131,394	39.0	170,452	45.9	253,513	59.9	-	-
Months of retained imports		5.1		5.4		6.6		8.0		-	-
1.4 Federal Government Accounts											
Revenue		79,568	25.8	83,515	24.8	92,608	24.9	99,397	23.5	99,102	22.3
Operating expenditure		63,757	20.6	68,699	20.4	75,224	20.2	91,298	21.6	89,141	20.1
Development expenditure (net)		34,232	11.1	35,069	10.4	38,312	10.3	27,518	6.5	27,589	6.2
Overall balance		-18,421	-6.0	-20,253	-6.0	-20,928	-5.6	-19,419	-4.6	-17,628	4.0

	Unit	1995	1998	1999	2000	2001	2002	2003	2004 ^(e)	2005 ^(f)
1.5 Price Indices										
Consumer Price Index (CPI)	% p.a.	3.4	5.3	2.8	1.6	1.4	1.8	1.2	1.4	2.4 ^(c)
Producer Price Index (PPI)	% p.a.	3.9	10.7	-3.3	3.1	-5.0	4.4	5.7	8.9	5.1 ^(c)
1.6 Unemployment	% of labour force	3.1	3.1	3.4	3.1	3.6	3.5	3.5	3.4	3.5
1.7 Exchange Rates (average for period)^(d)										
RM/US\$		2.510	3.920	3.800	3.800	3.800	3.800	3.800	3.800	3.800
RM/100Yen		2.680	3.000	3.351	3.527	3.130	3.039	3.282	3.542	3.616
RM/\$\$		1.770	2.340	2.242	2.205	2.122	2.123	2.181	2.242	2.332
RM/Pound Sterling		3.960	6.496	6.150	5.764	5.474	5.710	6.211	6.985	7.245
1.8 Money and Banking^(b)										
Money supply M1 ^{1/}	RM million	51,924	54,135	73,447	78,216	80,728	89,072	102,104	114,283	117,833
Money supply M2 ^{2/}	RM million	198,873	296,472	337,138	354,702	362,512	383,542	426,060	534,177	540,876
Money supply M3 ^{3/}	RM million	271,948	401,459	434,590	456,496	469,519	501,125	549,627	617,653	630,156
Commercial Banks										
Total deposits ^{4/}	RM million	161,993	307,440	339,708	362,991	368,792	388,406	433,008	550,930	555,696
Total loans ^{5/}	RM million	175,007	302,694	295,332	314,798	325,072	338,242	355,839	448,369	450,805
Non-performing loans	% of total loans	4.9	6.7	5.5	5.4	7.4	6.9	6.4	5.4	5.3
Interest rates										
3-month interbank	Avg. at end-period (%)	6.05	9.43	4.08	3.25	3.27	3.13	3.00	2.83	2.79
3-month fixed deposit	Avg. at end-period (%)	6.64	5.83	3.33	3.48	3.21	3.20	3.00	3.00	3.00
Savings deposit	Avg. at end-period (%)	3.70	3.87	2.76	2.72	2.28	2.12	1.86	1.58	1.55
Base lending rate	Avg. at end-period (%)	8.03	8.04	6.79	6.78	6.39	6.39	6.00	5.98	5.98
3-month Treasury Bills	Avg. at end-period (%)	5.50	6.86	3.53	2.98	2.73	2.82	2.77	1.96	2.22

Notes : ^(p) Preliminary ^(f) Forecast ^(e) Estimates

^{1/} Currency holdings and demand deposits of the private sector.

^{2/} M1 plus fixed savings and other deposits of the private sector placed with the Central Bank, commercial banks, negotiable certificates deposits and Central Bank certificates.

^{3/} Currency in circulation plus all private sector deposits with the Central Bank, commercial banks, finance companies, merchant banks and discount houses excludes placements among three financial institutions.

^{4/} As from April 1997, includes foreign currency deposits which were previously included in the various type of deposits.

^{5/} Starting from 1996 based on new classification.

^(d) Data as at 31st March 2005.

^(f) Data as at end of February 2005.

^(c) Refers to January-March 2005.

GDP, CPI AND PPI, 1985-2005 (Annual Growth Rate)



(p) Preliminary (f) Forecast

MOVEMENT OF EXCHANGE RATES AGAINST THE RINGGIT 1985-2005



* Data for 2005 up to 31st March

2. AREA, POPULATION AND LABOUR FORCE

2.1 Area	Sq. Km.	2.2 Population	Unit	1970	1980	1990	1999	2000	2001	2002	2003	2004	2005 ^(e)
Malaysia	330,252	Malaysia											
Peninsular Malaysia	131,805	Number (Mid-year)	mil	10.3	13.8	18.1	22.9	23.5	24.0	24.5	25.0	25.6	26.1
Sabah & Labuan	73,997	Growth	% p.a.	2.7	2.4	2.4	2.4	2.6	2.1	2.1	2.0	2.4	2.0
Sarawak	124,450	Density	per sq. km.	31.3	41.7	54.9	69.3	71.1	72.7	74.3	75.8	77.5	79.1

Age group	1990		2000		2001		2002		2003		2004		2005(e)		1991-2005
	% of		% of		% of		% of		% of		% of		% of		Average Growth (%)
	'000	Total	'000	Total	'000	Total	'000	Total	'000	Total	'000	Total	'000	Total	
0 - 14	6,774.9	37.4	8,003.1	34.1	8,114.2	33.8	8,219.9	33.5	8,325.2	33.2	8,435.4	32.9	8,525.3	32.6	1.5
15 - 64	10,669.1	58.9	14,560.0	62.0	14,960.7	62.2	15,339.1	62.5	15,723.1	62.7	16,111.6	62.9	16,483.0	63.1	2.9
65 & above	658.5	3.7	931.8	4.0	960.3	4.0	993.8	4.0	1,032.2	4.1	1,074.4	4.2	1,119.4	4.3	3.6
TOTAL	18,102.5	100.0	23,494.9	100.0	24,035.2	100.0	24,552.8	100.0	25,080.5	100.0	25,621.4	100.0	26,127.7	100.0	2.5

Note : ^(e) Estimates
Sources: EPU, DOS

	Unit	2000	2001	2002	2003	2004	2005 ^(e)
2.4 Labour Force							
Labour force	'000	9,573	9,892	10,199	10,515	10,856	10,927
Labour Force Participation Rates :							
Total ^{1/}	%	65.7	66.1	66.3	66.9	67.8	66.1
Male ^{2/}	%	85.7	86.1	86.3	87.1	88.1	85.2
Female ^{3/}	%	44.8	45.0	45.2	45.7	46.4	45.8
Unemployment	% of labour force	3.1	3.6	3.5	3.5	3.4	3.5
2.5 Employment							
Total	'000	9,271	9,533	9,840	10,148	10,482	10,540
Agriculture	% of total	15.2	14.8	14.3	13.8	13.4	13.3
Mining	% of total	0.4	0.4	0.4	0.4	0.4	0.4
Manufacturing	% of total	27.6	26.8	27.2	27.9	28.6	29.0
Construction	% of total	8.1	8.1	7.9	7.8	7.7	7.4
Services	% of total	48.7	49.9	50.2	50.1	49.9	49.9

Notes: ^(e) Estimates

^{1/} Total number of people economically active as a percentage of total number in the working age population of 15 to 64 years

^{2/} Total number of people economically active as a percentage of total number of males in the working age population

^{3/} Total number of people economically active as a percentage of total number of females in the working age population

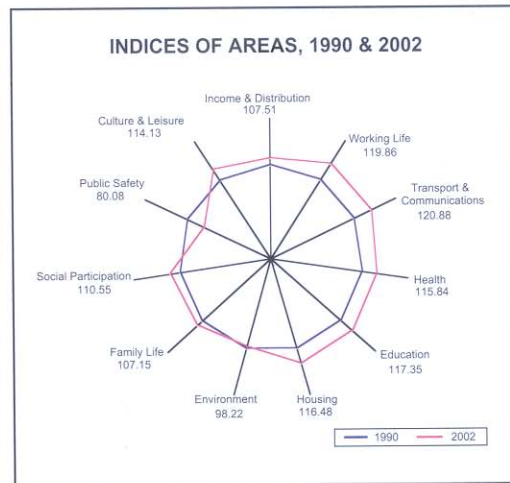
Sources : EPU, DOS

3. QUALITY OF LIFE

Index	1990 ^{1/}	2002
3.1 Area Indices and the Malaysian Quality of Life Index		
Income & Distribution	100.00	107.51
Working Life	100.00	119.86
Transport & Communications	100.00	120.88
Health	100.00	115.84
Education	100.00	117.35
Housing	100.00	116.48
Environment	100.00	98.22
Family Life	100.00	107.15
Social Participation	100.00	110.55
Public Safety	100.00	80.08
Culture and Leisure	100.00	114.13
MQLI	100.00	109.82

Note : ^{1/} 1990 is used as the base year

Source : Malaysian Quality of Life Report 2004.



3.2 Selected Social Indicators

	Unit	1990	2000	2001	2002	2003	2004	2005 ^(b)
Indicators								
Trade disputes	number	572	436	378	431	378	321	n.a.
Working days lost	per 1000 workers	30.2	0.7	0.6	0.2	0.1	0.3	n.a.
Industrial accidents	per 1000 workers	17.6	10.3	9.0	8.3	7.5	7.0	n.a.
Private motorcars and motorcycles	per 1000 population	224.7	404.5	423.0	441.7	461.4	n.a.	n.a.
Telephone fixed lines	per 1000 population	114	261	201	195	182	173	n.a.
Cellular phones	per 1000 population	4	218	311	377	443	563	n.a.
Internet subscribers	per 1000 population	n.a.	71	88	106	115	128	n.a.
Total road mileage	km	53,984	67,590	73,017	75,157	75,893	77,199	79,065
Total railway tracks	km	2,222	2,279	2,235	2,267	2,267	2,270	2,270
Average daily newspaper circulation	per 1000 population	145	140	144	148	147	n.a.	n.a.
Doctor-population ratio	persons	2,533	1,489	1,445	1,395	1,377	1,261	1,200
Crude birth rate	per 1,000 live births	28.4	22.6	22.2	21.7	21.6	21.3	n.a.
Crude death rate	per 1,000 population	4.7	4.5	4.4	4.6	4.7	4.6	n.a.
Infant mortality rate	per 1,000 live births	13.1	6.8	6.6	6.6	6.3	5.9	n.a.
Maternal mortality rate	per 1,000 population	0.2	0.3	0.3	0.3	0.3	0.3	n.a.
Life expectancy at birth: Male	years	68.8	70.4	70.6	70.7	70.9	71.0	n.a.
: Female	years	73.5	74.9	75.1	75.6	75.9	76.0	n.a.
Beds in hospitals ^(c)	number	38,119	34,573	34,522	34,524	39,545	n.a.	n.a.

	Unit	1990	2000	2001	2002	2003	2004	2005 ^(f)
Indicators								
Literacy rate	%	85.0	93.8	93.9	94.0	95.0	n.a.	n.a.
Enrolment : Primary school	%	99.8	92.8	92.1	92.4	92.7	92.8	97.4
: Power secondary school	%	83.0	83.7	83.6	81.2	81.8	82.0	86.1 ^(p)
: Upper secondary school	%	49.1	72.6	71.7	72.6	71.7	72.5	74.3 ^(p)
: Tertiary	%	2.9	6.6	7.6	8.3	8.3	7.9	16.4 ^(p)
Pupil-teacher ratio : Primary	pupils	21.4	19.0	18.4	18.1	17.6	17.2	16.3 ^(p)
: Secondary	pupils	20.2	17.6	17.2	16.5	16.4	16.3	16.2 ^(p)
Electricity coverage : Rural housing units	%	80.0 ⁽³⁾	89.5	90.9	91.4	91.5	92.7	92.8
Water coverage ⁽²⁾ : Total h/unit with piped water	%	81.0	92.0	93.0	93.5	93.0	93.0	94.0
Low-cost housing units	number	274,956	679,308	703,302	749,300	n.a.	n.a.	n.a.
Air quality	% of stations with API < 50	75.0	84.3	78.0	65.7	n.a.	n.a.	n.a.
Water quality	% of clean rivers	53.3	28.3	50.0	40.0	40.0	n.a.	n.a.
Forested land	%	58.9	56.4	56.0	61.3	59.3	59.2	n.a.
Divorces	% population aged 18-50	0.15	0.13	0.14	0.15	0.16	n.a.	n.a.
Household size	number	4.8	4.6	4.6	4.6	n.a.	n.a.	n.a.
Membership in residents' associations	number	406	1,607	1,738	1,818	1,945	2,249	2,347
Crimes	per 1,000 population	3.8	7.1	6.5	6.1	6.2	6.1	n.a.
Road accidents	per 1,000 vehicles	19.4	23.7	23.5	23.2	23.3	25.5	n.a.

Notes : ^(p) Preliminary ^(f) Forecast n.a. (not available)

⁽¹⁾ Include government hospitals and special medical institutions

⁽²⁾ Beginning from 2000, water coverage is presented by the percentage of population

⁽³⁾ % of population

Sources : EPU, DOS, Ministry of Works (MOW), Ministry of Health (MOH), Ministry of Transport (MOT), Ministry of Education (MOE), Ministry of Higher Education, Malaysian Communications & Multimedia Commission (MCMC), Royal Malaysian Police, National Registration Department, Industrial Relations Department, Jabatan Kemajuan Islam Malaysia (JAKIM)

3.3 Poverty

	Unit	1970 ^{1/}	1980	1990	1995	1997	1999	2002
Incidence of poverty : Overall	% of households	49.3	37.4	16.5	8.7	6.1	7.5	5.1
: Rural	% of households	58.6	45.8	21.1	14.9	10.9	12.4	11.4
: Urban	% of households	24.6	17.5	7.1	3.6	2.1	3.4	2.0
Incidence of hardcore poverty : Overall	% of households	n.a.	n.a.	3.9	2.1	1.4	1.4	1.0
: Rural	% of households	n.a.	n.a.	5.2	3.6	2.5	2.4	2.3
: Urban	% of households	n.a.	n.a.	1.3	0.9	0.4	0.5	0.4

3.4 Gender-Related Information

	Unit	1990	2000	2001	2002	2003
Female labour force	%	35.9	47.2	46.8	46.7	47.7
Total female employed	%	35.5	34.7	34.9	35.6	35.9
Female unemployed ratio	%	5.4	3.2	3.9	3.8	3.6
Female labour force participation rate	%	47.8	46.7	46.9	46.7	47.7
Female primary schools enrolment	%	48.6	48.6	48.7	48.7	48.6
Female secondary schools enrolment	%	49.7	50.5	50.4	50.4	50.3
Female university enrolment	%	46.2	56.2	57.8	58.8	60.9
Female members in Parliament *	%	5.3	8.2	7.8	7.3	9.1

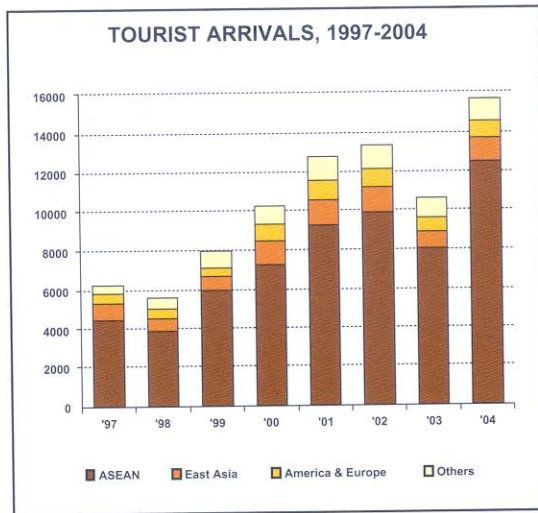
Notes : * 10.0% for 2004 and 2005

^{1/} Refers to Peninsular Malaysia only

Sources : EPU, DOS, Ministry of Women Family and Community Development

3.5 Tourist Arrivals by Region

Region	2001		2002		2003		2004	
	'000	% of Total	'000	% of Total	'000	% of Total	'000	% of Total
ASIA	10,870	85.1	11,578	87.1	9,164	86.6	14,092	89.7
ASEAN	9,208	72.1	9,878	74.3	8,042	76.0	12,491	79.5
Eastern Asia	1,325	10.4	1,315	9.9	833	7.9	1,226	7.8
Southern Asia	212	1.7	244	1.8	209	2.0	249	1.6
Western Asia	115	0.9	132	1.0	80	0.8	126	0.8
AMERICAS	322	2.5	283	2.1	270	2.6	272	1.7
Caribbean	57	0.4	53	0.4	51	0.5	38	0.2
Central America	21	0.2	20	0.2	17	0.2	13	0.1
Northern America	186	1.5	164	1.2	160	1.5	180	1.1
Southern America	58	0.5	47	0.4	42	0.4	42	0.3
OCEANIA	290	2.3	254	1.9	199	1.9	266	1.7
EUROPE	697	5.5	631	4.7	451	4.3	534	3.4
Eastern Europe	63	0.5	77	0.6	68	0.6	30	0.2
Northern Europe	363	2.8	324	2.4	194	1.8	277	1.8
Southern Europe	74	0.6	75	0.6	64	0.6	79	0.5
Western Europe	197	1.5	155	1.2	125	1.2	149	0.9
AFRICA	162	1.3	148	1.1	137	1.3	141	0.9
OTHERS	435	3.4	397	3.0	355	3.4	398	2.5
TOTAL	12,775	100.0	13,292	100.0	10,577	100.0	15,703	100.0



Source : Ministry of Tourism

4. OWNERSHIP OF SHARE CAPITAL (AT PAR VALUE) OF LIMITED COMPANIES^{1/}

	1990		1995		1999		2000		2002		Average Annual Growth Rate (%) 1996-2002
	RM Million	% Total	RM Million	% Total	RM Million	% Total	RM Million	% Total	RM Million	% Total	
4.1 Ownership Group											
Bumiputera	20,877.5	19.3	36,981.2	20.6	59,394.4	19.1	62,976.0	18.9	73,161.8	18.7	10.2
Bumiputera Individuals & Institutions	15,322.0	14.2	33,353.2	18.6	54,046.0	17.4	57,173.6	17.2	66,746.0	17.1	10.4
Trust Agencies ^{2/}	5,555.5	5.1	3,628.0	2.0	5,348.4	1.7	5,802.4	1.7	6,415.8	1.6	8.5
Non-Bumiputera	50,754.0	46.8	78,026.9	43.4	125,013.3	40.3	137,412.8	41.3	168,962.7	43.2	11.7
Chinese	49,296.5	45.5	73,552.7	40.9	117,372.4	37.9	129,318.3	38.9	159,806.9	40.9	11.7
Indians	1,068.0	1.0	2,723.1	1.5	4,752.9	1.5	5,136.8	1.5	5,951.1	1.5	11.8
Others	389.5	0.3	1,751.1	1.0	2,888.0	0.9	2,957.7	0.9	3,204.7	0.8	9.0
Foreigners	27,525.5	25.4	49,792.7	27.7	101,279.2	32.7	103,909.4	31.3	112,727.6	28.9	12.4
Nominee Companies	9,220.4	8.5	14,991.4	8.3	24,389.5	7.9	28,119.4	8.5	35,969.5	9.2	13.3
Total	108,377.4	100.0	179,792.2	100.0	310,076.4	100.0	332,417.6	100.0	390,821.6	100.0	11.7

Notes: ^{1/} Exclude Government holdings (except through trust agencies).

^{2/} Refers to shares held through trust agencies, such as Permodalan Nasional Berhad (PNB) and State Economic Development Corporations (SEDCs).

Sources : Companies Commission of Malaysia and EPU estimates.

5. GROSS DOMESTIC PRODUCT

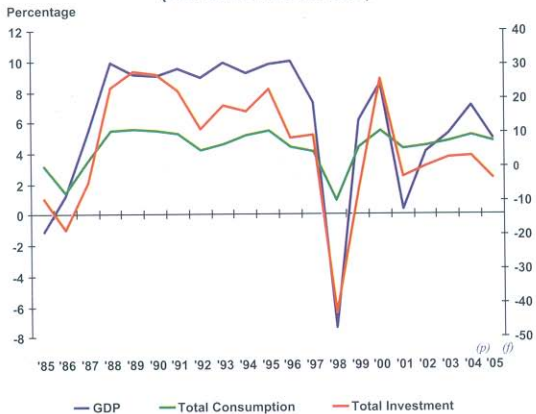
	2000		2001		2002		2003		2004 ^(p)		2005 ^(f)	
	RM million	% growth	RM million	% growth	RM million	% growth	RM million	% growth	RM million	% growth	RM million	% growth
5.1 Supply (at constant 1987 prices)												
Agriculture, forestry & fishing	18,662	6.1	18,551	-0.6	19,036	2.6	20,123	5.7	21,135	5.0	21,836	3.3
Mining and quarrying	15,385	0.3	15,160	-1.5	15,774	4.1	16,699	5.9	17,384	4.1	18,250	5.0
Manufacturing	67,250	18.3	63,299	-5.9	65,872	4.1	71,312	8.3	78,323	9.8	81,882	4.5
Construction	6,964	0.6	7,108	2.1	7,275	2.3	7,417	1.9	7,276	-1.9	7,205	-1.0
Non-Government Services	99,077	-6.8	105,196	6.2	111,979	6.4	116,429	4.0	124,454	6.9	131,715	5.8
Electricity, gas & water	8,278	16.9	8,568	3.5	9,087	6.1	9,601	5.7	10,381	8.1	11,159	7.5
Transport, storage & communications	16,858	9.8	18,249	8.3	18,929	3.7	20,017	5.5	21,694	7.2	23,003	6.0
Wholesale & retail trade, hotels & restaurant	311,16	5.9	31,907	2.5	32,732	2.6	33,208	1.5	35,575	7.1	37,537	5.5
Finance, real estate & business services	26,755	7.1	29,288	9.5	33,262	13.6	35,043	5.4	37,309	6.5	39,539	6.0
Other services	16,070	4.0	17,184	6.9	17,969	4.6	18,560	3.3	19,495	5.0	20,477	5.0
Government services	14,331	2.0	14,997	4.6	15,892	6.0	17,104	7.6	17,979	5.1	18,878	5.0
Less : Imputed bank service charges	15,832	6.3	17,678	11.7	21,225	20.1	22,593	6.4	23,331	3.3	24,402	4.6
Plus : Import duties	4,721	-11.2	4,594	-2.7	5,384	17.2	5,184	-3.7	4,820	-7.0	4,958	2.9
GDP at purchasers' value	210,557	8.9	211,227	0.3	219,988	4.1	231,674	5.3	248,040	7.1	260,323	5.0-6.0
5.2 Demand (at constant 1987 prices)												
Private expenditure	127,966	17.5	123,750	-3.3	124,127	0.3	130,992	5.5	145,471	11.1	158,119	8.7
Consumption	95,370	13.0	97,630	2.4	101,946	4.4	108,722	6.6	119,681	10.1	129,854	8.5
Investment	32,596	32.6	26,120	-19.9	22,181	-15.1	22,270	0.4	25,790	15.8	28,265	9.6
Public expenditure	56,112	11.2	64,937	15.7	72,404	11.5	77,166	6.6	77,952	1.0	74,803	-4.0
Consumption	23,868	1.6	28,007	17.3	31,336	11.9	34,476	10.0	36,746	6.6	38,392	4.5
Investment	32,244	19.4	36,930	14.5	41,068	11.2	42,690	3.9	41,206	-3.5	36,411	-11.6
Exports of goods and non-factor services	246,158	16.1	227,685	-7.5	237,904	4.5	253,006	6.3	292,475	15.6	316,216	8.1
Imports of goods and non-factor services	223,062	24.4	203,866	-8.6	216,802	6.3	227,578	5.0	272,720	19.8	287,941	5.6
GNP at purchasers' value	210,557	8.9	211,227	0.3	219,988	4.1	231,674	5.3	248,040	7.1	260,323	5.0

	1999		2000		2001		2002		2003 ^(p)		2004 ^(f)		
	RM million	% growth	RM million	% growth	RM million	% growth	RM million	% growth	RM million	% growth	RM million	% growth	
Savings and Investment Balance													
Savings :													
RM million (current prices)	115,211	2.0	125,964	9.3	107,693	-14.5	116,476	8.2	135,094	16.0	157,062	16.3	
% of GNP	41.2		40.1		34.9		34.6		36.3		37.1		
Investment ^(f) :													
RM million (current prices)	67,317	-10.9	93,711	39.2	80,006	-14.6	85,981	7.5	84,247	-2.0	100,481	19.3	
% of GNP	24.1		29.8		25.9		25.5		22.7		23.8		
5.3 Major Output Production													
Rubber	'000 tonnes	769	-13.2	928	20.7	882	-4.9	890	0.9	986	10.8	1,186	20.4
Crude palm oil	'000 tonnes	10,554	26.9	10,842	2.7	11,804	8.9	11,909	0.9	13,355	12.1	13,976	4.7
Sawlogs	'000 cu.m ²⁾	21,776	0.5	23,074	6.0	18,923	-18.0	20,649	9.1	21,532	4.3	21,576	0.2
Tin	'000 tonnes	7.3	27.6	6.3	-13.7	5.0	-21.2	4.2	-15.2	3.4	-20.3	2.8	-16.6
Crude oil & condensates	'000 bpd ³⁾	691	-4.7	681	-1.5	666	-2.4	698	4.9	738	5.6	762	3.6
Natural gas	mmscfd ⁴⁾	3,952	6.2	4,367	10.5	4,542	3.7	4,676	3.0	5,013	7.2	5,196	4.0
Manufacturing production index	1993=100	168	12.9	209.7	25.0	195.8	-6.6	204.7	4.5	226.1	10.5	254.7	12.7

Notes: ^(p) Preliminary ^(f) Forecast¹⁾ Including change in stock²⁾ Cubic metres³⁾ Barrels per day⁴⁾ Million standard cubic foot per day

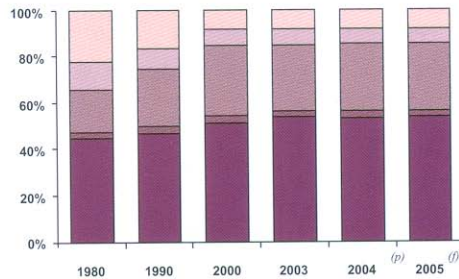
Sources : EPU, BNM, MOF, DOS

GDP, CONSUMPTION AND INVESTMENT, 1985-2005 (Annual Growth Rate)



(p) Preliminary (f) Forecast

STRUCTURE OF PRODUCTION, 1980-2005 (% of GDP)^{1/}



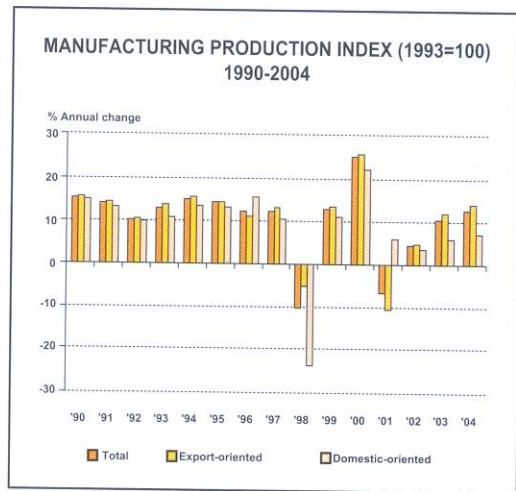
	1980	1990	2000	2003	2004 (p)	2005 (f)
■ Agriculture	21.0	16.3	8.9	8.7	8.5	8.4
■ Mining	12.1	9.4	7.3	7.2	7.0	7.0
■ Manufacturing	17.2	24.6	31.9	30.8	31.6	31.5
■ Construction	2.7	3.5	3.3	3.2	2.9	2.8
■ Services	43.1	46.8	53.9	57.6	57.4	57.8

^{1/}: Excludes import duties and bank service charges

(p) Preliminary (f) Forecast

Selected Industries	Weight	Annual Change (%)							
		1990	1995	1999	2000	2001	2002	2003	2004
5.4 Manufacturing Production Index (1993=100)	100.0	15.4	14.3	12.9	25.0	-6.6	4.5	10.5	12.7
<i>Export-Oriented Industries</i>	71.8	15.7	14.5	13.5	25.8	-10.4	5.0	11.9	14.2
Electronics & electrical	32.9	32.2	20.6	15.7	40.5	16.0	8.1	9.6	17.7
Chemicals & plastic	15.5	6.2	11.5	17.1	15.1	-7.7	2.7	20.8	14.1
Wood products	7.7	14.3	6.0	-7.3	4.0	1.3	-6.0	0.9	12.7
Textiles & apparels	5.6	8.4	5.4	4.0	8.7	-8.3	-6.2	-2.2	-11.7
Rubber products	4.6	18.0	13.0	3.6	4.0	3.3	2.0	18.7	14.8
<i>Domestic-Oriented Industries</i>	28.2	15.0	13.2	11.1	22.1	5.9	3.4	6.1	7.1
Construction-related	8.9	16.9	11.8	14.5	18.5	4.5	3.8	10.2	-0.6
Fabricated metal	4.5	18.6	9.1	-1.1	33.8	3.9	0.8	7.4	29.2
Food manufacturing	4.1	0.4	7.3	5.7	16.6	4.4	8.7	8.8	3.0
Transport equipment	3.7	32.5	36.1	53.4	19.1	19.0	6.2	-5.5	8.6
Petroleum products	1.8	13.8	13.9	-0.3	20.0	19.2	-4.1	2.3	1.3
Paper products	1.7	...	9.2	12.8	15.1	1.9	12.8	8.0	2.3

Source : DOS



	2000		2001		2002		2003		2004 ^{1/}	
	RM million	% growth	RM million	% growth	RM million	% growth	RM million	% growth	RM million	% growth
5.5 Distributive Trade										
Wholesale										
Value of sales	106,041	6.6	109,242	3.0	118,136	8.1	124,936	5.8	102,037	10.0
Value of purchases	88,911	46.0	90,009	1.2	97,599	8.4	103,828	6.4	88,718	15.5
Number of workers ('000)	707	-3.5	694	-1.8	701	1.0	714	1.8	530	-1.0
Salaries & wages	3,115	27.0	3,180	2.1	3,436	8.1	3,742	8.9	2,725	-0.8
Retail										
Value of sales	51,976	6.1	54,330	4.5	56,573	4.1	56,597	0.0	43,251	3.2
Value of purchases	43,485	35.0	46,054	5.9	48,865	6.1	46,264	-5.3	35,458	2.8
Number of workers ('000)	1,068	-4.5	1,075	0.7	1,090	1.4	1,103	1.2	811	-1.8
Salaries & wages	1,816	39.8	1,982	9.2	2,120	7.0	2,156	1.7	1,570	-1.9
Total										
Value of sales	158,017	6.4	163,571	3.5	174,709	6.8	181,532	3.9	145,288	7.9
Value of purchases	132,396	42.2	136,062	2.8	146,464	7.6	150,093	2.5	124,176	11.6
Number of workers ('000)	1,775	-4.1	1,769	-0.3	1,791	1.2	1,817	1.4	1,341	-1.5
Salaries & wages	4,931	31.4	5,161	4.7	5,556	7.7	5,897	6.1	4,295	-1.2
Sales per worker (RM)	89,021	11.0	92,446	3.8	97,526	5.5	99,914	2.4	108,304	9.5
Salaries & wages per worker (RM)	2,778	37.1	2,917	5.0	3,102	6.3	3,246	4.6	3,201	0.3

Note: ^{1/} Data refer up to September 2004

Sources : EPU, DOS

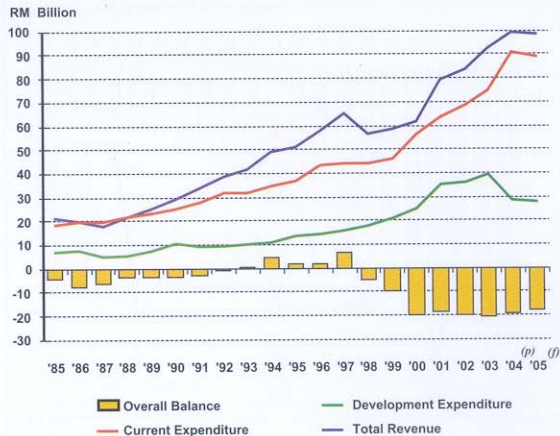
6. PUBLIC SECTOR ACCOUNTS

	Unit	2001	2002	2003	2004	2005 ^(a)		Unit	2001	2002	2003	2004	2005 ^(a)
6.1 Federal Government Finance							6.2 Consolidated Public Sector Finance						
6.1.1 Total revenue	RM mil	79,567	83,515	92,608	99,397	99,102	6.2.1 General Government						
	% of GDP	23.8	23.1	23.5	22.2	22.3	Revenue	RM mil	91,633	96,763	107,055	116,663	115,760
Direct taxes	% of total	52.9	53.1	46.4	49.0	45.6	Operating expenditure	RM mil	72,299	75,450	84,163	102,727	100,091
Indirect taxes	% of total	24.4	27.0	23.6	23.5	26.3	Current surplus	RM mil	19,334	21,313	22,892	13,936	15,669
Non-tax revenue	% of total	22.7	19.9	29.9	27.5	28.1	% of GDP		5.8	5.9	5.8	3.3	3.5
6.1.2 Current Expenditure	RM mil	63,757	68,699	75,224	91,298	89,141	6.2.2 Non-Financial Public Enterprises(NFPEs) Surplus/Deficit	RM mil	39,484	45,324	55,651	52,295	52,892
Emoluments	% of total	27.4	29.5	28.9	26.0	25.0	% of GDP		11.8	12.5	14.1	12.4	11.9
Supplies & services	% of total	16.8	16.4	18.6	18.2	21.1	6.2.3 Total Public Sector Current Surplus/Deficit	RM mil	58,818	66,637	78,543	66,231	68,560
Asset acquisition	% of total	2.1	1.4	1.9	1.9	1.6	% of GDP		17.6	18.5	19.9	14.8	14.6
Debt service charges	% of total	15.1	14.1	14.0	12.0	14.9	6.2.4 Development Expenditure	RM mil	59,724	69,125	83,315	67,772	63,523
Pension & gratuities	% of total	7.4	7.5	7.8	6.6	7.0	% of GDP		17.9	19.1	21.1	16.0	14.3
Subsidies	% of total	7.1	5.4	3.6	6.3	6.0	6.2.5 Overall Surplus/Deficit	RM mil	-906	-2,488	-4,772	-1,541	5,037
Others	% of total	21.0	22.1	22.5	25.7	21.0	% of GDP		-0.3	-0.7	-1.2	-0.3	1.1
6.1.3 Development Expenditure	RM mil	35,235	35,977	39,353	28,864	28,304	6.2.6 External Debt						
	% of GDP	10.5	9.9	10.0	6.4	6.4	Debt service ratio ^{1/}	%	6.8	6.6	6.2	4.3	-
Economic services	% of total	36.1	34.6	35.0	41.1	49.2	Total debt	RM mil	173,419	185,660	186,640	197,321	-
Social services	% of total	43.7	50.2	45.0	35.5	26.8	Medium and long term debt	RM mil	149,346	153,225	152,950	154,298	-
Security	% of total	9.3	12.0	15.3	14.3	10.8							
General administration	% of total	10.9	3.2	4.7	9.1	13.3							
6.1.4 Overall Surplus/Deficit	RM mil	-18,422	-20,253	-20,928	-19,419	-17,628							
	% of GDP	-5.5	-5.6	-5.3	-4.3	-3.8							
6.1.5 Sources of Finance (net)													
Domestic borrowing	RM mil	13,381	6,076	23,250	25,650	-							
External borrowing	RM mil	6,295	8,020	-3,709	120	-							
Change in assets	RM mil	-1,254	6,157	1,387	-6,351	-							

Notes : ^(a) Budget 2005 & BNM Annual Report 2004^{1/} % of exports of goods and services

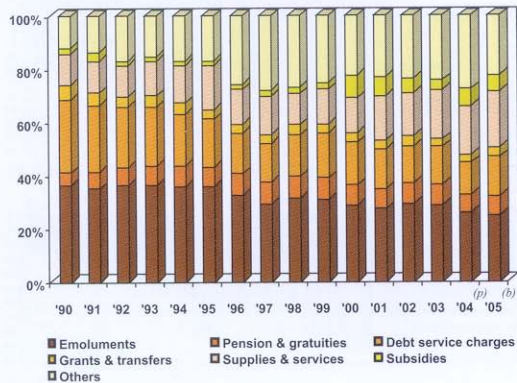
Sources: EPU, BNM, DOS, MOF

FEDERAL GOVERNMENT FINANCE, 1985-2005

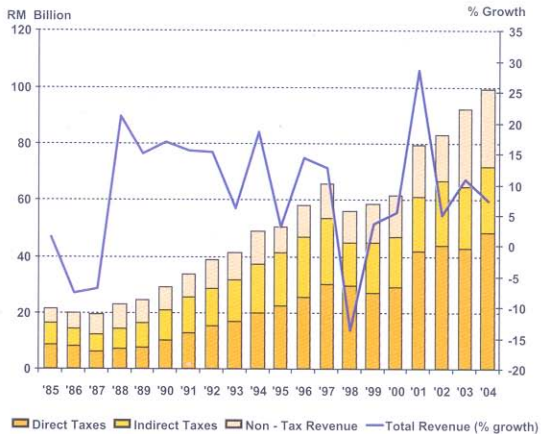


COMPONENTS OF FEDERAL GOVERNMENT OPERATING EXPENDITURE, 1990-2005

(Share to Total)

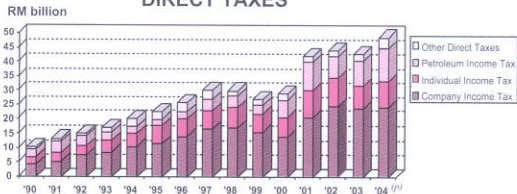


SOURCES OF FEDERAL GOVERNMENT REVENUE 1985-2004

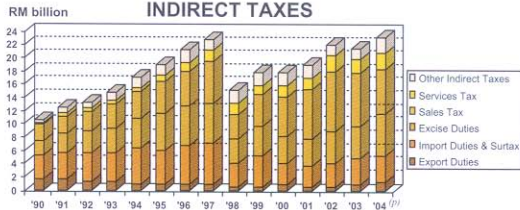


MALYSIAN TAX STRUCTURE, 1990-2004

DIRECT TAXES



INDIRECT TAXES



(p) Preliminary

7. BALANCE OF PAYMENTS

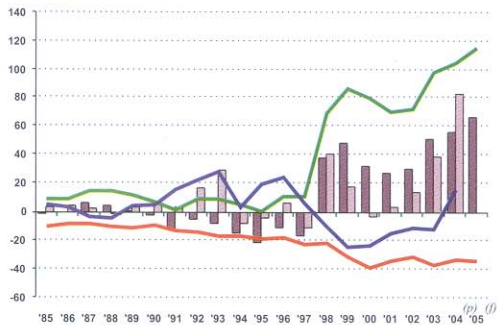
	2000		2001		2002		2003		2004 ^(p)		2005 ^(f)	
	RM million	% of GNP	RM million	% of GNP	RM million	% of GNP	RM million	% of GNP	RM million	% of GNP	RM million	% of GNP
7.1 Goods (Net)	79,144	25.2	69,854	22.6	72,117	21.4	97,701	26.3	104,474	24.7	114,820	25.9
Exports	374,033	119.0	334,326	108.3	358,504	106.5	398,998	107.4	481,240	113.8	514,880	116.0
Imports	294,889	93.8	264,472	85.7	286,387	85.1	301,297	81.1	376,766	89.1	400,060	90.1
7.2 Services Account (Net)	-10,670	-3.4	-8,366	-2.7	-5,996	-1.8	-15,026	-4.0	-8,780	-2.1	-8,016	-1.8
Transportation	-11,736	-3.7	-11,352	-3.7	-11,572	-3.4	-13,274	-3.6	-17,783	-4.2	-19,314	-4.4
Travel	11,158	3.6	16,148	5.2	17,102	5.1	11,607	3.1	19,398	4.6	21,475	4.8
Other services	-10,030	-3.2	-13,187	-4.3	-11,242	-3.3	-13,019	-3.5	-9,675	-2.3	-9,362	-2.1
Government services n.i.e.	-62	-0.0	25	0.0	-284	-0.1	-341	-0.1	-721	-0.2	-815	-0.2
7.3 Income	-28,909	-9.2	-25,623	-8.3	-25,061	-7.4	-22,527	-6.1	-24,549	-5.8	-26,387	-5.9
Compensation of employees	-975	-0.3	-1,014	-0.3	-1,179	-0.4	-950	-0.3	-1,142	-0.3	-1,409	-0.3
Investment income	-27,934	-8.9	-24,609	-8.0	-23,882	-7.1	-21,577	-5.8	-23,408	-5.5	-24,978	-5.6
7.4 Current Transfer	-7,313	-2.3	-8,178	-2.6	-10,566	-3.1	-9,300	-2.5	-14,633	-3.5	-14,125	-3.2
7.5 Current Account (Net)	32,252	10.3	27,687	9.0	30,494	9.1	50,848	13.7	56,511	13.7	66,292	14.9
7.6 Financial Account (Net)												
Financial Account	-23,848	-7.6	-14,791	-4.8	-11,941	-3.5	-12,146	-3.3	15,083	3.6	-	-
Direct investment	6,694	2.1	1,091	0.4	4,935	1.5	4,194	1.1	9,739	2.3	-	-
Portfolio investment	-9,395	-3.0	-2,466	-0.8	-6,506	-1.9	4,168	1.1	33,829	8.0	-	-
Other investment	-21,147	-6.7	-13,416	-4.3	-10,370	-3.1	-20,508	-5.5	-28,485	-6.7	-	-
7.7 Overall balance	-3,703	-1.2	3,662	1.2	14,191	4.2	39,059	10.5	83,061	19.6	-	-
BNM international reserves, net	113,541	36.1	117,203	38.0	131,394	39.0	170,452	45.9	253,513	59.9	-	-
(Months of retained imports)	4.5		5.1		5.4		6.6		8.0		-	-

Notes : ^(p) Preliminary ^(f) Forecast

Sources: DOS, BNM

BALANCE OF PAYMENTS, 1985-2005

RM Billion



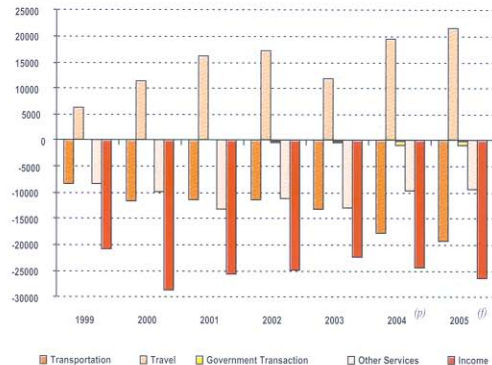
Current Account
 Overall Balance
 Goods

Services & Income
 Capital Account

(p) Preliminary (f) Forecast

BALANCE ON SERVICES, 1999-2005

RM Million



Transportation
 Travel
 Government Transaction
 Other Services
 Income

(p) Preliminary (f) Forecast

8. Bursa Malaysia

	2001	2002	2003	2004	2005 ¹⁾
8.1 Major Indices					
Composite Index	696.1	646.3	793.9	907.4	872.4
Emas Index	165.2	157.3	195.6	214.3	204.2
Second Board Index	134.1	98.2	140.6	110.9	97.9
Industrial Index	1,348.2				
8.2 Market Capitalisation (RM billion)	465.0	481.6	640.3	722.0	690.3
8.3 Selected World Stock Market Indices					
New York, Dow Jones	10,021.5	8,341.6	10,453.9	10,783.0	10,151.1
Nikkei, Tokyo	10,542.6	8,579.0	10,676.6	11,488.8	11,006.4
Hang Seng, Hong Kong	11,397.2	9,321.3	12,575.9	14,230.1	13,859.6
8.4 New Listing					
Main Board	6	22	16	15	7 ²⁾
Second Board	14	22	22	26	9 ²⁾
Mesdaq Market	0	7	20	31	11 ²⁾
Total	20	51	58	72	27 ²⁾
8.5 Listed Companies					
Main Board	520	562	598	622	632 ²⁾
Second Board	292	294	276	278	279 ²⁾
Mesdaq Market	0	12	32	63	74 ²⁾
Total	812	868	906	963	985 ²⁾

Notes : ¹⁾ Data as at 26 April 2005

²⁾ Data as at 15th April 2005

³⁾ Data as at 18th April 2005

Source: Bursa Malaysia

8. Bursa Malaysia

	2001		2002		2003		2004		2005 ^{1/}	
	Volume (mil units)	Value (RM mil)	Volume (mil units)	Value (RM mil)	Volume (mil units)	Value (RM mil)	Volume (mil units)	Value (RM mil)	Volume (mil units)	Value (RM mil)
8.6 Turnover^{2/}:										
Consumer Products	1,820.3	7,549.6	3,788.8	13,225.1	7,022.2	17,250.7	8,088.8	19,051.5	1,812.5	3,413.0
Industrial Products	6,625.4	9,678.7	7,399.1	13,355.0	19,865.7	30,164.6	22,841.0	32,174.3	5,558.9	6,334.1
Construction	5,074.2	8,480.3	5,388.9	10,732.5	9,245.0	17,094.7	6,883.7	13,229.0	1,311.5	2,458.0
Trading/Services	12,729.0	33,207.9	15,143.4	44,920.4	27,587.3	62,860.7	26,898.9	77,688.0	4,543.5	12,892.8
Technology ^{3/}	831.2	3,803.6	946.2	3,688.0	6,621.7	7,734.8	8,167.7	9,016.4	1,709.3	1,389.9
Finance	8,193.7	19,645.2	7,946.3	24,059.8	13,444.2	30,964.1	12,753.6	41,553.2	2,335.0	7,228.1
Hotels	472.1	384.5	1,129.9	1,001.2	1,135.5	910.6	1,736.7	2,242.0	235.6	345.4
Properties	4,350.7	2,985.1	6,851.5	6,403.3	16,341.3	15,021.1	14,033.2	20,262.9	2,477.4	4,015.4
Plantation	1,255.8	3,045.3	1,899.9	5,962.9	3,844.9	11,024.0	5,258.1	15,062.3	554.1	1,712.7
Mining	137.5	193.3	246.2	589.0	193.1	387.8	110.4	353.4	0.0	0.9
Trusts	17.8	10.3	26.5	15.7	23.6	16.1	45.9	41.5	8.0	7.3
Infrastructure Project Companies	578.0	1,752.1	389.2	1,175.0	1,516.0	3,620.7	1,199.6	3,347.0	275.2	595.6
Closed End Fund	16.9	7.8	36.6	22.9	70.0	46.3	58.9	45.0	4.5	3.5
Loans	2,331.8	1,093.5	1,168.9	1,054.8	1,448.7	1,471.2	1,657.8	1,553.8	169.0	126.3
Loans(PN4)	-	-	6.8	1.4	2.3	0.4	-	-	-	-
TSR ^{4/} /Warrant	10,063.1	4,148.3	8,836.5	5,194.4	1,3332.2	6,210.5	10,424.9	5,501.3	1,291.7	803.8
TSR ^{4/} /Warrant (PN4)	-	-	53.6	12.2	9.5	1.0	2.8	0.5	-	-
PN4 Condition	-	-	750.7	208.9	846.6	174.8	573.0	168.3	-	-
Trading of Rights	451.7	30.6	735.5	232.7	528.2	191.4	287.8	118.1	11.7	1.0
Call Warrants Board	-	-	-	-	1,122.2	1,192.8	1,657.5	2,453.4	108.3	210.2
Grand Total	54,949.2	9,6016.1	62,744.5	131,855.2	124,200.2	206,338.3	122,680.4	243,862.1	22,406.2	41,538.0

Notes: ^{1/} Data as at 28th February 2005

^{2/} The Main Board, Second Board and Mesdaq Market (Mesdaq Market merged with Bursa Malaysia with effect from 18th March 2002)

^{3/} Launched on 15th May 2000

^{4/} Transferable Subscription Rights

Source: Bursa Malaysia

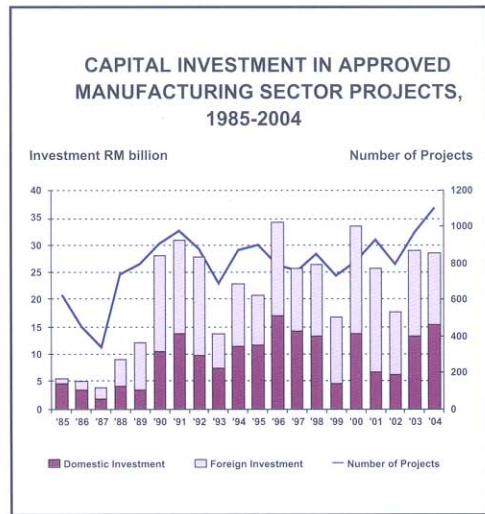
9. MITI APPROVED PROJECTS

	Unit	1999	2000	2001	2002	2003	2004
9.1 MITI Approved Projects							
Number of projects approved		725	805	928	792	965	1,101
Potential employment	'000s	65.9	88.1	89.4	64.7	77.2	88.6
Proposed called-up capital	RM mil	3,162.8	3,577.8	4,142.2	2,498.4	6,613.7	4,450.6
Loans	RM mil	7,532.5	15,694.7	9,971.5	5,336.8	12,843.5	14,576.8
Total proposed capital investment	RM mil	17,020.8	33,610.3	25,774.9	17,876.9	29,144.7	28,741.8
9.2 Foreign Investment in Approved Projects (By Selected Countries)							
Australia	% of total	0.4	0.7	0.8	0.9	0.7	0.8
France	% of total	0.1	0.0	0.4	0.6	0.3	1.0
Japan	% of total	8.2	14.5	17.8	5.1	8.3	7.7
Singapore	% of total	7.4	9.0	11.8	8.8	7.8	11.5
Taiwan	% of total	2.2	4.6	6.0	2.2	4.0	3.4
United Kingdom	% of total	1.6	3.9	0.7	1.5	24.7	1.0
United States	% of total	42.1	37.8	18.0	23.0	13.9	8.1
Germany	% of total	1.5	8.3	13.8	43.7	1.1	36.0
Others	% of total	36.6	21.2	30.7	14.2	3.3	14.2
TOTAL	RM mil	12,273.8	19,848.5	18,907.2	11,578.0	15,640.4	13,112.3

Source: Ministry of International Trade & Industry (MITI)

	Unit	2000	2001	2002	2003	2004
9.3 Proposed Capital Investment in Approved Projects (By Selected Industry)						
Food manufacturing	% of total	3.1	3.5	6.8	3.7	3.9
Textiles & textile products	% of total	3.5	1.7	1.1	1.0	2.9
Wood & wood products	% of total	1.1	1.6	2.6	3.8	3.1
Paper, printing & publishing	% of total	4.5	19.5	1.8	0.9	16.4
Chemicals & chemical products	% of total	2.9	5.5	5.1	3.3	10.5
Petroleum & petrochemical prod.	% of total	7.0	0.5	27.2	1.5	6.6
Rubber products	% of total	2.8	2.5	2.1	0.7	1.3
Plastic products	% of total	1.8	2.1	3.0	3.0	2.4
Non-metallic mineral products	% of total	5.3	7.8	2.7	1.6	2.7
Basic metal products	% of total	2.3	2.3	2.0	29.3	6.7
Fabricated metal products	% of total	1.2	2.0	2.7	4.5	4.1
Machinery manufacturing	% of total	2.4	2.8	4.0	2.2	1.4
Electronics & electrical products	% of total	36.2	40.1	31.6	17.2	29.9
Transport equipment	% of total	2.0	4.4	3.9	24.2	4.6
Others	% of total	23.9	3.7	3.4	3.0	3.4
TOTAL	RM mil	33,610.3	25,774.9	17,876.9	28,900.0	28,741.5

Source : MITI



10. EXTERNAL SECTOR

	Unit	2000	2001	2002	2003	2004 ^(a)
10.1 Exports						
Total exports	RM mil	373,270	334,284	357,430	397,844	480,740
Annual growth	%	16.1	-10.4	6.9	11.3	20.8
Major primary commodities						
Rubber	RM mil	2,571	1,886	2,492	3,583	5,198
Palm oil	RM mil	9,948	9,876	14,838	20,192	20,107
Sawlogs and sawn timber	RM mil	5,509	3,796	4,867	5,183	5,284
Crude oil	RM mil	14,241	11,118	11,600	15,659	21,318
Manufactured products	RM mil	317,908	285,316	302,021	326,322	390,449
Annual growth	%	17.0	-10.3	5.9	8.0	19.7
Textiles, clothings & footwear	RM mil	10,433	9,054	8,570	8,757	10,328
Chemical & petroleum	RM mil	23,142	23,288	24,848	30,635	41,188
Electrical and electronic products	RM mil	230,429	200,307	212,298	222,851	257,051
Manufactures of metal	RM mil	8,618	8,692	8,796	11,242	16,140
10.2 Imports⁽¹⁾						
Total imports	RM mil	311,459	280,229	303,090	316,538	400,077
Annual growth	%	25.3	-10.0	8.2	4.4	26.4
Consumption goods	RM mil	17,040	16,620	18,951	18,721	23,226
Intermediate goods	RM mil	232,687	203,808	218,848	235,448	287,717
Capital goods	RM mil	44,171	41,285	43,199	40,799	55,487
Others	RM mil	11,043	11,620	12,972	13,080	16,420
Imports for re-exports	RM mil	6,518	6,896	9,120	8,490	17,226

Notes: ^(a) Provisional

⁽¹⁾ Based on Broad Economic Categories (BEC)

Sources: EPU, BNM, DOS, MOF

	Unit	2000	2001	2002	2003	2004 ^(p)
10.3 Direction of Exports						
USA	% of total	20.5	20.2	20.7	19.6	18.8
Singapore	% of total	18.4	16.9	16.9	15.7	15.0
North East Asia ^{1/}	% of total	11.7	11.6	12.6	13.0	12.8
Japan	% of total	13.1	13.3	11.1	10.7	10.1
ASEAN ^{2/}	% of total	8.2	8.2	8.9	9.1	10.1
China	% of total	3.1	4.4	5.6	6.5	6.7
10.4 Sources of Imports						
Japan	% of total	21.0	19.2	17.8	17.1	15.9
USA	% of total	16.6	16.0	16.3	15.4	14.5
North East Asia ^{1/}	% of total	12.8	12.2	13.7	13.1	13.1
ASEAN ^{2/}	% of total	9.7	10.1	11.0	12.4	12.8
Singapore	% of total	14.4	12.6	12.0	11.7	11.1
China	% of total	4.0	5.2	7.7	8.7	9.8
10.5 Trade Prices and Terms of Trade						
Export Price Index	index (1987=100)	173.5	171.0	174.5	178.1	186.3
Import Price Index	index (1987=100)	160.7	160.8	160.9	161.7	164.7
Terms of Trade	index (1987=100)	107.9	106.3	108.4	110.2	113.1

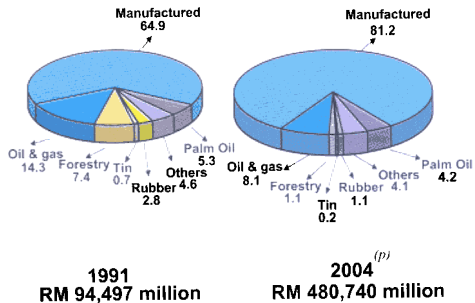
Notes: ^(p) Preliminary

^{1/} Exclude Japan and China

^{2/} ASEAN-10 exclude Singapore

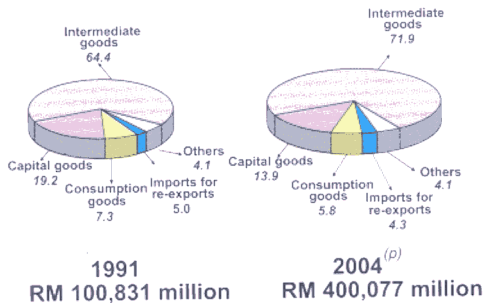
Sources: EPU, DOS, BNM

DIVERSIFICATION OF EXPORTS, 1991 AND 2004
(% of Total)



(p) Provisional

IMPORTS BY BROAD ECONOMIC CATEGORIES, 1991 AND 2004
(% of Total)



(p) Provisional

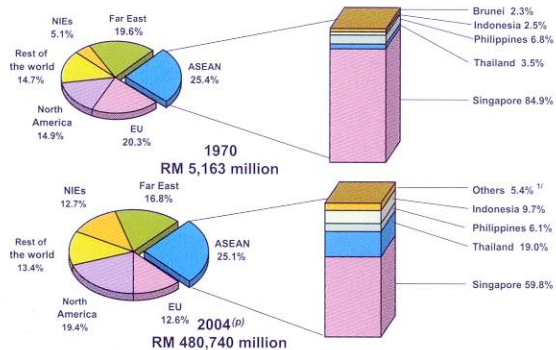
10.6 Trade Balance by Main Trading Partners (RM million)

Country	2000			2001			2002			2003			2004 ^(P)		
	Exports	Imports	Balance	Exports	Imports	Balance	Exports	Imports	Balance	Exports	Imports	Balance	Exports	Imports	Balance
North America															
United States	76,579	51,744	24,835	67,618	44,881	22,736	74,131	49,555	24,576	77,872	48,717	29,155	90,181	57,880	32,301
Canada	3,043	1,445	1,598	2,077	1,133	944	2,152	1,262	890	2,278	1,369	909	3,011	1,759	1,252
EU	51,019	33,527	17,492	45,442	35,968	9,475	43,894	34,583	9,310	49,929	37,701	12,228	60,388	48,031	12,357
United Kingdom	11,566	6,080	5,486	8,759	6,846	1,913	8,327	5,966	2,361	8,845	5,995	2,850	10,556	6,639	3,917
Germany	9,336	9,282	54	7,766	10,451	-2,685	7,970	11,188	-3,218	9,130	14,666	-5,536	10,485	17,870	-7,385
France	2,752	5,139	-2,387	3,569	4,349	-780	5,170	4,263	907	6,673	4,581	2,092	7,081	5,543	1,538
Netherlands	15,616	2,197	13,419	15,438	2,469	12,969	13,136	2,453	10,683	13,010	2,152	10,858	15,760	3,435	12,325
ASEAN	99,028	74,940	24,088	84,049	63,578	20,470	92,386	69,494	22,892	98,677	76,360	22,317	120,601	95,817	24,785
Brunei	965	13	952	1,044	17	1,027	1,141	12	1,129	1,205	18	1,187	1,203	54	1,149
Indonesia	6,484	8,623	-2,139	5,930	8,536	-2,606	6,804	9,683	-2,880	8,086	11,175	-3,089	11,677	15,936	-4,259
Philippines	6,558	7,562	-1,004	4,892	6,987	-2,095	5,162	9,956	-4,794	5,467	11,808	-6,342	7,362	10,710	-3,348
Singapore	68,574	44,696	23,879	56,643	35,352	21,291	60,534	36,250	24,284	62,488	37,142	25,347	72,176	44,477	27,699
Thailand	13,485	11,987	1,498	12,756	11,120	1,636	15,092	11,982	3,109	17,505	14,492	3,013	22,954	21,996	957
Far East															
Japan	48,770	65,513	-16,743	44,393	53,750	-9,357	39,707	53,902	-14,195	42,507	54,039	-11,532	48,552	63,737	-15,184
China	11,507	12,321	-813	14,683	14,473	210	20,008	23,329	-3,321	25,791	27,630	-1,839	32,148	39,290	-7,141
NIEs															
Hong Kong	16,854	8,557	8,297	15,437	7,064	8,373	20,281	8,827	11,454	25,723	8,508	17,215	28,686	10,850	17,836
South Korea	12,464	13,926	-1,462	11,107	11,249	-142	11,866	16,013	-4,147	11,555	17,304	-5,749	16,839	19,868	-3,029
Taiwan	14,189	17,511	-3,323	12,167	15,930	-3,763	13,264	16,891	-3,627	14,324	15,669	-1,345	15,763	21,651	-5,888
Central & South America	5,633	2,587	3,046	4,473	3,266	1,207	3,994	3,233	761	3,974	3,565	409	5,693	4,837	856
Australia	9,210	6,052	3,158	7,795	5,944	1,851	8,108	5,415	2,694	9,924	4,805	5,119	15,783	6,793	8,990
TOTAL (incl. others)	373,270	311,459	61,811	334,284	280,229	54,055	357,430	303,090	54,340	397,884	316,538	81,347	480,740	400,077	80,663

Note: ^(P) Provisional

Sources : EPU, DOS

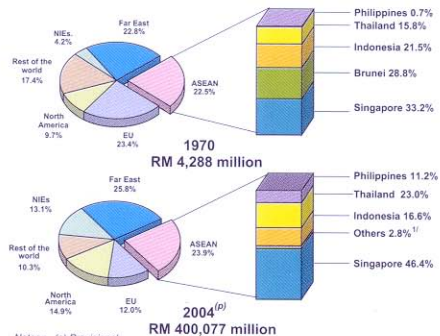
MALAYSIA'S EXPORTS BY DESTINATION, 1970 AND 2004



Notes : (p) Provisional

^{1/} Include Brunei, Vietnam, Myanmar, Laos and Cambodia

MALAYSIA'S IMPORTS BY ORIGIN, 1970 AND 2004



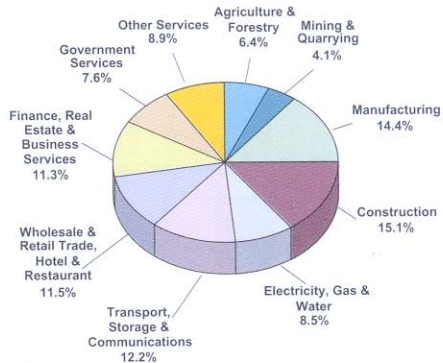
Notes : (p) Provisional

^{1/} Include Brunei, Vietnam, Myanmar, Laos and Cambodia

11. PRIVATIZATION

11.1 Privatization Achievement	1983-2004
Total Projects Privatized:	485
Existing projects	346
New projects	139
Jobs eliminated from government payroll	113,209
Savings:	
Capital expenditure (RM bil)	138.9
Proceeds from sale of government equity and assets (RM bil)	28.9
Market capitalisation as at 30 Nov 2004 (RM bil)	170.9
% of total Bursa Malaysia capitalisation	23.6

**SECTORAL DISTRIBUTION OF PRIVATIZED PROJECTS
1983-2004 (% of Total)**



Total Projects : 485

12. ENERGY AND INFRASTRUCTURE

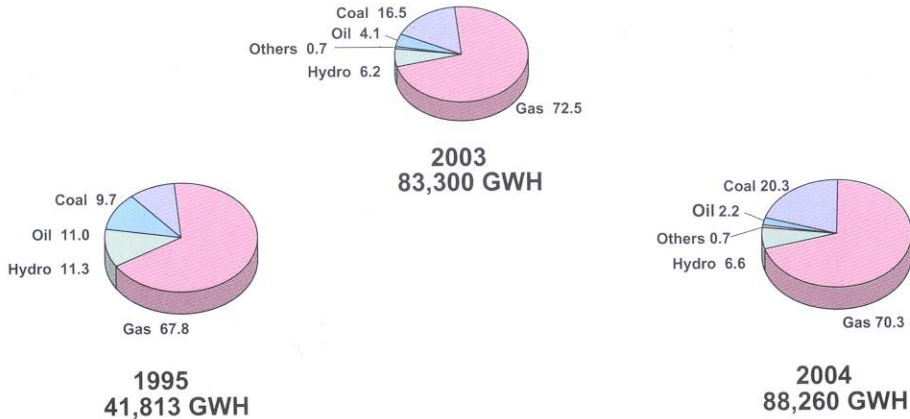
	2000		2001		2002		2003		2004 ^(p)		2005 ^(f)	
	PJ ^{1/}	% of Total	PJ ^{1/}	% of Total	PJ ^{1/}	% of Total	PJ ^{1/}	% of Total	PJ ^{1/}	% of Total	PJ ^{1/}	% of Total
12.1 Primary Commercial Energy - Final Demand												
Final Demand By Source :												
Petroleum products	820.0	65.9	851.1	64.5	864.2	62.0	886.0	61.2	954.5	62.0	1,023.1	62.7
Electricity	220.4	17.7	234.3	17.8	248.0	17.8	264.1	18.3	287.1	18.7	310.0	19.0
Natural gas	161.8	13.0	193.5	14.7	236.3	17.0	246.3	17.0	246.4	16.0	246.6	15.1
Coal & coke	41.5	3.3	40.9	3.1	45.5	3.3	50.7	3.5	51.4	3.3	52.0	3.2
TOTAL	1,243.7	100.0	1,319.8	100.0	1,394.0	100.0	1,447.1	100.0	1,539.4	100.0	1,631.7	100.0
	1995	1996	1997	1998	1999	2000	2001	2002	2003	2004^(p)	2005^(f)	
12.2 Electricity - Demand and Supply												
Peak demand (Megawatt)	7,212	8,143	9,106	9,304	9,690	10,657	11,055	11,833	12,504	13,848	14,531	
Installed capacity (Megawatt)	10,764	12,257	12,992	13,894	13,625	14,291	14,761	15,483	18,562	19,423	20,267	
Reserve margin (%)	49.2	50.5	42.7	49.3	40.6	34.1	33.5	30.8	48.4	40.3	39.5	

Notes : ^(p) Preliminary ^(f) Forecast

^{1/} Joule is the unit of energy used to establish the equivalent physical heat content of each energy form, where 1 petajoule (PJ) = 10¹⁵ joules

Sources : EPU, Ministry of Energy, Water and Communications, Tenaga Nasional Berhad (TNB), Sabah Electricity Sdn. Bhd. (Lembaga Letrik Sabah), Sarawak Electricity Supply Corporation

GENERATION MIX OF ELECTRICITY, 1995-2004 (% of Total)



	Unit	2000	2001	2002	2003	2004	2005 ^(f)
12.3 Roads By Surface Type							
Paved	km	51,766	57,136	58,433	59,194	59,513	61,277
Unpaved	km	15,824	15,881	16,724	16,698	17,687	17,788
TOTAL	km	67,590	73,017	75,157	75,893	77,199	79,065
12.4 Railway Statistics							
Inter-city daily ridership	'000s	10.5	9.6	9.4	9.2	10.0	10.7
KTM Komuter daily ridership	'000s	52.3	57.3	60.5	67.5	76.0	81.0
Light Rail daily ridership	'000s	200.0	233.0	245.6	334.2	321.2	352.0
Total freight traffic	'000 tonnes	4,978	4,151	3,803	4,607	4,610	5,946
Container handling	TEUs	223,718	238,000	262,478	273,641	302,736	359,856
12.5 Air Traffic Statistics							
No. of Passengers							
Domestic	million	19.6	19.7	20.4	21.9	23.5	24.6
International	million	13.0	12.7	13.3	12.3	14.8	15.8
TOTAL (including transit)	million	32.6	32.4	33.7	34.2	39.4	41.6
Cargo Handled							
Domestic	tonnes	121,218	137,182	146,647	152,242	164,517	176,812
International	tonnes	656,815	564,905	669,823	720,193	762,806	830,696
TOTAL (including transit)	tonnes	778,033	702,087	816,470	872,435	957,072	1,040,337
12.6 Port Statistics							
Composition of Cargo Throughput							
General cargo	mil tonnes	26.0	27.7	43.6	31.7	40.9	52.7
Dry bulk cargo	mil tonnes	30.7	31.9	31.7	31.7	31.8	31.9
Liquid bulk cargo	mil tonnes	82.8	87.5	95.4	98.6	101.9	105.2
Containerized cargo	mil tonnes	81.3	97.4	131.1	150.6	161.5	173.2
TOTAL	mil tonnes	220.8	244.5	301.8	312.6	336.1	363.0

Note: ^(f) Forecast

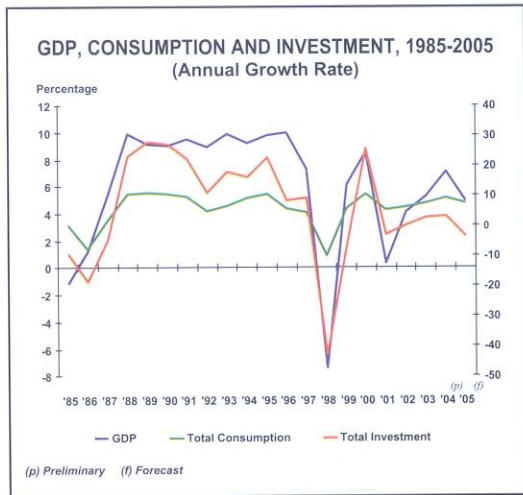
Sources : EPU, DOS, Ministry of Transport (MOT), MOW, Malaysian Communications and Multimedia Commission, Malaysia Airports Holdings Berhad.

13 INTERNATIONAL COMPARISON

Country	2001	2002	2003	2004	2005 ^(f)
13.1 Real Gross Domestic Product					
World (% Annual Growth)	2.5	3.0	4.0	5.0	4.3
Advanced Economies	1.2	1.6	2.0	3.6	2.6
Germany	0.8	0.1	-0.1	2.0	0.8
Japan	0.2	-0.3	1.4	4.4	0.8
United Kingdom	2.3	1.8	2.2	3.4	2.6
United States	0.8	1.9	3.0	4.3	3.6
Developing Countries	4.2	4.7	6.4	6.6	6.3
NIEs	1.3	5.3	3.1	5.5	4.0
Hong Kong	0.5	1.9	3.2	7.5	4.0
Singapore	-2.0	3.2	1.4	8.8	4.0
Korea	3.8	7.0	3.1	4.6	4.0
Taiwan	-2.2	3.9	3.3	5.6	4.0
ASEAN 6					
Brunei	3.1	2.8	3.1	1.1	1.6
Indonesia	3.8	4.4	4.9	4.8	5.5
Malaysia	0.3	4.1	5.3	7.1	5-6
Philippines	1.8	4.3	4.7	5.2	4.7
Thailand	2.2	5.3	6.9	6.2	5.6
Vietnam	6.9	7.1	7.3	7.0	7.2
China	7.5	8.3	9.3	9.0	8.5

Note : ^(f) Forecast

Sources: BNM, MOF, EIU, World Economic Outlook April 2005, World Competitiveness Yearbook 2004

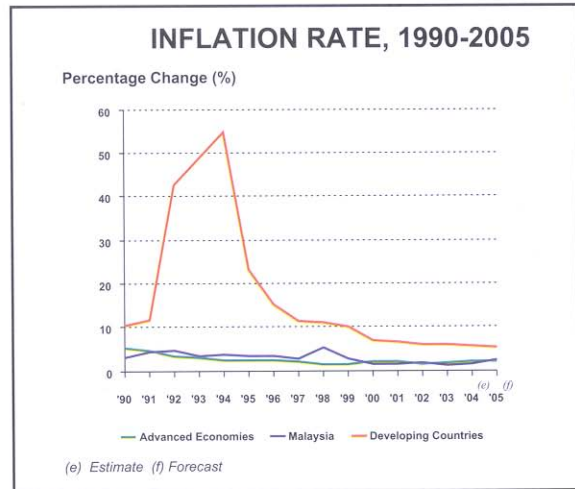


Country	2001	2002	2003	2004	2005 ^(f)
13.2 Consumer Price Index (% Annual Growth)					
Advanced Economies	2.1	1.5	1.8	2.0	2.0
Germany	1.9	1.3	1.0	1.8	1.5
Japan	-0.7	-1.0	-0.2	-0.2	-0.2
United Kingdom ^{1/}	1.2	1.3	1.4	1.3	1.7
United States	2.8	1.6	2.3	2.7	2.7
Developing Countries	6.7	6.0	6.0	5.7	5.5
NIEs	2.0	1.0	1.5	2.4	2.2
Hong Kong	-1.6	-3.0	-2.6	-0.4	1.0
Singapore	1.0	-0.4	0.5	1.7	1.5
Korea	4.1	2.8	3.5	3.6	2.9
Taiwan	0.0	-0.2	-0.3	1.6	1.6
ASEAN 6					
Brunei	0.6	-2.3	0.3	0.9	1.6
Indonesia	11.5	11.8	6.8	6.1	7.0
Malaysia	1.4	1.8	1.2	1.4	2.5
Philippines	6.1	2.9	3.0	5.5	6.8
Thailand	1.7	0.6	1.8	2.7	2.9
Vietnam	-0.4	4.0	3.2	7.7	5.5
China	0.7	-0.8	1.2	3.9	3.0

Notes: ^(f) Forecast

^{1/} Retail price index excluding mortgage interest

Sources : BNM, MOF, World Economic Outlook April 2005,
World Competitiveness Yearbook 2004



Country	Year	GDP (US\$ billion)	Value Added as percent of GDP (%)		
			Agriculture	Industry ^{1/}	Services
13.3 Structure of Output					
Selected Developed Countries					
Germany	2003	2,403.2	1.0	29.0	69.0
Japan	2003	4,300.9	1.0	30.0	68.0
United Kingdom	2003	1,794.9	1.0	27.0	72.0
United States	2003	10,948.5	2.0	23.0	75.0
NIEs					
Hong Kong	2003	156.7	0.0	12.0	88.0
Singapore	2003	91.3	0.0	35.0	65.0
Rep. of Korea	2003	605.3	3.0	35.0	62.0
Taiwan ^{3/}	2003	284.0	2.9	35.3	61.8
ASEAN 5					
Indonesia	2003	208.3	17.0	44.0	40.0
Malaysia	2003	61.0^{2/}	8.7	45.3	53.5
Philippines	2003	80.6	14.0	32.0	53.0
Thailand	2003	143.0	10.0	44.0	46.0
Vietnam	2003	39.2	22.0	40.0	38.0
China	2003	1,417.0	15.0	52.0	33.0

Notes: ^{1/} Includes mining, manufactured, construction, electricity, gas and water

^{2/} GDP (at constant 1987 prices)

^{3/} Data refer to 2001

Sources: EPU, World Development Report 2005, World Development Indicators 2005

Country	Year	Percentage of GDP (%)				
		Government Consumption	Private Consumption	Gross Domestic Investment	Exports of Goods & Services	Resource Balance
13.4 Structure of Demand (in current prices)						
Selected Developed Countries						
Germany	2003	19.0	59.0	18.0	36.0	2.2
Japan	2003	18.0	57.0	24.0	12.0	3.1
United Kingdom	2003	21.0	66.0	16.0	25.0	-1.9
United States	2003	15.0	71.0	18.0	10.0	-4.9
NIEs						
Hong Kong	2003	11.0	57.0	23.0	170.0	4.0 ^{2/}
Singapore	2003	12.0	41.0	13.0	174.0 ^{1/}	19.0 ^{2/}
Rep. of Korea	2003	13.0	55.0	29.0	38.0	7.0 ^{2/}
ASEAN 5						
Indonesia	2003	9.0	69.0	16.0	31.0	10.0 ^{2/}
Malaysia	2003	14.9	46.9	28.0	109.2	21.9
Philippines	2003	11.0	72.0	19.0	48.0	-5.0 ^{2/}
Thailand	2003	11.0	57.0	25.0	66.0	12.0 ^{2/}
Vietnam	2003	7.0	66.0	33.0	60.0	-7.0 ^{2/}
China	2003	13.0	40.0	44.0	34.0	2.0 ^{2/}

Notes: ^{1/} Data refer to 2002 ^{2/} Data refer to 2000

Sources: EPU, BNM, World Development Indicators 2005, World Competitiveness Yearbook 2004

	2000	2001	2002	2003	2004	2005 ^(f)		2000	2001	2002	2003	2004	2005 ^(f)
13.5 Current Account of Balance of Payments (US\$ billion)													
Advanced Economies							Developing Countries						
Exports (f.o.b.)	4,677.2	4,448.3	4,580.4	5,249.7	6,202.6	6,935.9	Exports (f.o.b.)	1,618.3	1,583.6	1,723.1	2,102.6	2,699.5	3,192.7
Imports (f.o.b.)	4,898.4	4,635.1	4,754.9	5,457.9	6,493.4	7,284.9	Imports (f.o.b.)	1,409.0	1,427.2	1,533.6	1,854.7	2,357.9	2,792.9
Trade balance	-221.2	-186.8	-174.5	-208.2	-290.8	-349.0	Trade balance	209.2	156.4	189.5	247.8	341.7	399.8
Services (net)	74.1	63.3	79.0	91.4	93.7	109.5	Services (net)	-57.1	-59.6	-58.3	-64.9	-63.2	-69.1
Balance on goods and services	-147.1	-123.5	-95.5	-116.7	-197.1	-239.5	Balance on goods and services	152.1	96.8	131.3	182.9	278.5	330.7
Income (net)	32.2	44.7	18.9	61.1	66.7	55.3	Income (net)	-120.2	-120.8	-131.2	-145.1	-160.2	-159.6
Current transfers (net)	-136.0	-122.8	-141.5	-176.3	-197.4	-196.8	Current transfers (net)	56.3	64.8	84.9	111.3	128.3	132.3
Current account balance	-250.9	-201.6	-218.1	-231.9	-327.8	-381.0	Current account balance	88.2	40.8	85.0	149.1	246.6	303.4
Developing Asia							Malaysia⁽¹⁾						
Exports (f.o.b.)	604.2	593.5	676.6	832.0	1,063.1	1,256.6	Exports (f.o.b.)	98.4	88.0	94.3	105.0	126.6	135.5
Imports (f.o.b.)	540.1	536.4	605.2	763.3	996.3	1,198.7	Imports (f.o.b.)	77.6	69.6	75.4	79.3	99.1	105.3
Trade balance	64.0	57.0	71.4	68.7	66.9	57.9	Trade balance	20.8	18.4	18.9	25.7	27.5	30.2
Services (net)	-10.6	-10.7	-7.1	-13.3	-6.3	-4.4	Services (net)	-2.8	-2.2	-1.6	-4.0	-2.3	-2.1
Balance on goods and services	53.4	46.3	64.3	55.5	60.6	53.5	Balance on goods and services	18.0	16.2	17.4	21.8	25.2	28.1
Income (net)	-35.6	-38.2	-33.3	-24.7	-25.2	-21.5	Income (net)	-7.6	-6.7	-6.6	-5.9	-6.5	-6.9
Current transfers (net)	28.5	32.7	41.1	55.1	67.9	65.1	Current transfers (net)	-1.9	-2.2	-2.8	-2.4	-3.9	-3.7
Current account balance	46.3	40.8	72.2	85.8	103.3	97.1	Current account balance	8.5	7.3	8.0	13.4	14.9	17.4

Notes: ^(f) Forecast

⁽¹⁾ Data for 2004 is preliminary

Sources: EPU, DOS, BNM, World Economic Outlook April 2005

	1998	1999	2000	2001	2002	2003	2004	2005 ^(f)
13.6 Savings and Investment (as % of GDP)								
World								
Savings	23.0	23.2	23.9	23.2	23.1	23.9	24.9	25.4
Investment	23.4	23.2	23.6	23.2	22.9	23.5	24.6	25.2
Advanced Economies								
Savings	21.8	21.5	21.7	20.6	19.4	19.1	19.4	19.2
Investment	21.7	21.9	22.2	20.9	20.0	20.0	20.7	21.0
Resource Balance	0.1	-0.4	-0.5	-0.3	-0.7	-0.9	-1.0	-0.4
Developing Asia								
Savings	31.5	31.5	31.5	32.3	34.1	36.5	38.2	39.4
Investment	29.5	29.5	29.8	30.8	31.7	33.6	35.5	36.9
Resource Balance	2.0	2.0	1.7	1.5	2.4	2.9	2.7	2.5
Malaysia (as % of GNP)								
Savings	42.2	41.2	40.1	34.9	34.6	36.3	37.1	34.7
Investment ⁽¹⁾	28.2	24.1	29.8	25.9	25.5	22.7	23.8	19.7
Resource Balance	14.0	17.1	10.3	9.0	9.1	13.6	13.3	15.0

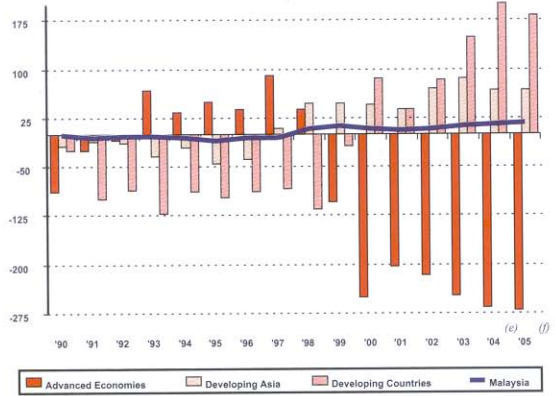
Notes: ^(f) Forecast

⁽¹⁾ Including change in stock

Sources: EPU, World Economic Outlook April 2005

CURRENT ACCOUNT BALANCE , 1990-2005

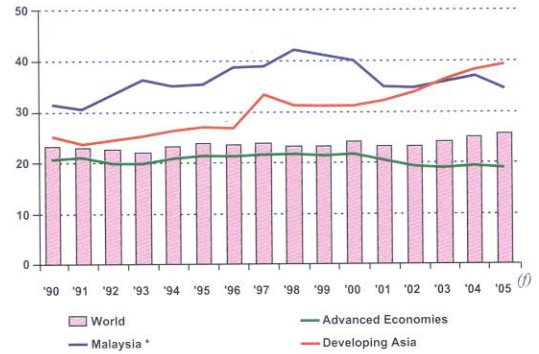
US\$ billion



(e) Estimate (f) Forecast

WORLD SAVINGS RATE, 1990-2005 (% of GDP)

Percentage



(f)

Country	Year	Central Government Current Revenue ^{1/} (% of GDP)	Central Government Expenditure (% of GDP)	Overall Budget Surplus/Deficit (% of GDP)	External Debt (% of GNP)	Foreign Direct Investment Flows (US \$ millions)
13.7 Government, Debt And Resource Flows						
Selected Developed Countries						
Germany	2003	30.2	32.8	-2.1	-	11,267
United Kingdom	2003	36.0	39.7	-3.7	-	20,696
United States	2003	17.4	21.0	-3.7	-	39,889
Australia	2003	23.9	35.6	0.8	-	6,851
NIEs						
Singapore	2003	22.2	16.9	4.8	-	11,409
Rep. of Korea	2003	22.8	18.6	2.9	-	3,222
Mexico	2003	14.7	15.4	-1.2	16.4	10,783
ASEAN 5						
Indonesia	2003	17.7	21.1	-1.9	77.5	-597
Malaysia	2004	22.2	26.8	-4.3	14.0	3,451 ^{2/}
Philippines	2003	14.4	17.4	-3.9	71.4	319
Thailand	2003	19.5	15.4	2.0	38.1	1,949
Vietnam	2003	19.1	-24.3	-2.9	40.8	1,450
China	2003	8.9	24.9	-2.5	13.7	53,505

Notes: ^{1/} Excluding grants ^{2/} Data refer to Approved Manufactured Projects

Sources: EPU, BNM, MITI, World Development Report 2005, World Development Indicators 2005, World Competitiveness Yearbook 2004

Country	Surface Area ('000 km ²) (2003)	Population		Population Density (per km ²) (2003)	Urban Population as % of Total Population (2003)	Percentage of Population using Improved Water Sources (2002)
		Millions (2003)	Average Growth (%) (1990-2003)			
13.8 Population, Urbanization and Population Density						
Selected Developed Countries						
Germany	357.00	83.0	0.5	237.0	88.0	100.0
Japan	378.00	128.0	0.4	350.0	79.0	100.0
United Kingdom	243.00	59.0	0.3	246.0	90.0	100.0 ^{2/}
United States	9,629.00	291.0	1.4	32.0	78.0	100.0
Australia	7,741.00	20.0	1.3 ^{2/}	3.0	91.0 ^{1/}	100.0 ^{2/}
NIEs						
Hong Kong	1.10 ^{1/}	7.0	1.4	6,541.0	100.0	-
Singapore	1.00	4.0	2.6	6,343.0	100.0	100.0 ^{2/}
Rep. Korea	99.00	48.0	1.8	485.0	84.0	92.0
Mexico	1,958.00	102.0	1.9	54.0	75.0	91.0
ASEAN 6						
Brunei ^{1/}	5.80	0.4	2.7	67.0	-	-
Indonesia	1,905.00	215.0	4.2	119.0	44.0	78.0
Malaysia	330.00	25.0	3.7	75.8	59.0	95.0
Philippines	300.00	82.0	3.9	273.0	61.0	85.0
Thailand	513.00	62.0	1.5	121.0	20.0	85.0
Vietnam	332.00	81.0	3.3	250.0	25.0	73.0
China	9,598.00	1,288.0	3.6	138.0	39.0	77.0

Notes: ^{1/} Data refer to 2002 ^{2/} Data refer to 2000

Sources: EPU, MOF, World Development Indicators 2005, The World Competitiveness Yearbook 2004

Country	Year	Total Employment (million)	Employment by Sector (% of total employment)		
			Agriculture	Industry ^{1/}	Services
13.9 Structure of Employment					
Selected Developed Countries					
Germany	2003	38.25	2.4	27.2	70.3
Japan	2003	63.16	4.6	28.8	66.6
United Kingdom	2003	28.65	1.5 ^{2/}	25.0 ^{2/}	73.6 ^{2/}
United States	2003	137.74	1.9	21.0	77.1
Australia	2003	9.48	3.9	21.5	74.6
NIEs					
Hong Kong	2003	3.23	0.3 ^{2/}	14.4	85.3
Singapore	2003	2.03	0.3 ^{2/}	25.8 ^{2/}	4.0 ^{2/}
Rep. of Korea	2003	22.14	8.8	27.6	63.6
Taiwan	2003	9.57	7.3	34.8	57.9
Mexico	2003	41.39	17.0	24.5	58.5
ASEAN 4					
Indonesia	2003	90.80	45.1 ^{2/}	17.5 ^{2/}	37.4 ^{2/}
Malaysia	2004	10.48	13.4	28.6	49.9
Philippines	2003	31.52	37.0	15.7	47.3
Thailand	2003	33.81	40.1	24.5	35.5
China	2003	744.32	50.0 ^{2/}	22.5 ^{2/}	27.5 ^{2/}

Notes: ^{1/} Includes manufacturing, mining, electricity, construction, gas and water for other countries. For Malaysia includes manufacturing only.

^{2/} Data refers to 2001

Sources: EPU, World Competitiveness Yearbook 2004

Country	Life Expectancy at birth		Infant mortality rate (per 1,000 live births)	Crude Birth Rate (per 1,000 population)	Connections to Internet (No of hosts per 1,000 population)	Computers Per capita (No of computers per 1,000 people)	Adult Literacy Rate (% age 15 & above)		Tertiary Gross Enrolment Ratio (%)	Cellular Mobile Telephone Subscribers No. of Subscribers (per 1,000 in habitants)
	Male	Female					Male	Female		
	2003		2003	2003	2001	2003	2002		2002 ^p	2002
13.10 Quality of Life										
Selected Developed Countries										
Germany	76.0	81.0	4.0	9.0	41.2	510.9	-	-	49.0	727.0
Japan	78.0	85.0	3.0	9.0	49.0	509.4	-	-	49.0	637.0
United Kingdom	75.0	80.0	5.0	12.0	57.4	546.5	-	-	64.0	841.0
United States	75.0	80.0	7.0	14.0	179.1	744.8	-	-	81.0	488.0
NIEs										
Hong Kong	78.0	83.0	4.0	7.0	33.6	458.7	-	-	26.0	942.0
Singapore	76.0	80.0	3.0	11.0	72.3	533.7	97.0	89.0	19.0 ^q	796.0
Rep. Korea	71.0	78.0	5.0	12.0	4.8	391.2	-	-	85.0	679.0
Taiwan	71.9 ^r	72.2 ^r	-	13.9 ²	20.0 ³	308.8	-	-	-	255.0
ASEAN 6										
Brunei	73.6 ⁴	78.3 ⁴	-	21.1 ⁶	8.0	74.6 ⁵	-	-	-	-
Indonesia	65.0	69.0	31.0	21.0	0.2	13.2	92.0	83.0	15.0	55.0
Malaysia	70.9	75.9	6.3	21.6	2.4	161.5	92.0	85.0	27.0	377.0
Philippines	68.0	72.0	27.0	25.0	0.4	25.1	93.0	93.0	31.0	191.0
Thailand	67.0	72.0	23.0	15.0	1.6	49.6	95.0	91.0	37.0	260.0
Vietnam	68.0	72.0	19.0	18.0	-	11.7 ^{5r}	94.0	87.0	12.0	23.0
China	69.0	73.0	30.0	15.0	0.1	32.5	95.0	87.0	13.0	161.0

Notes : ^p Preliminary except for Germany, Hong Kong and Singapore

^r Refer to 1992

² Refer to 1997

³ Refer to 1999

⁴ Refer to 2000

⁵ Refer to 2001

⁶ Refer to 2002

Sources: EPU, World Development Indicators 2005, World Competitiveness Yearbook 2004, Human Development Report 2003

Country	1998	1999	2000	2001	2002	2003
13.11 GNP Per Capita (US\$)						
Selected Developed Countries						
Germany	26,630	25,690	25,130	23,560	22,740	25,270
Japan	33,720	33,310	35,420	35,610	34,010	34,180
United Kingdom	22,830	24,080	25,200	25,120	25,510	28,320
United States	30,700	32,260	34,370	34,400	35,400	37,870
NIEs						
Hong Kong	24,820	25,580	26,830	25,780	24,690	25,860
Singapore	23,510	22,660	22,780	21,100	20,690	21,230
Rep. Korea	8,500	8,530	9,010	9,490	9,930	12,030
Taiwan	n.a	n.a	n.a	12,700	n.a	n.a
ASEAN 6						
Brunei	15,313	15,454	24,630	n.a	n.a	n.a
Indonesia	670	590	570	680	710	810
Malaysia	3,176	3,245	3,509	3,383	3,611	3,905
Philippines	1,080	1,040	1,030	1,030	1,030	1,080
Thailand	2,080	1,980	2,020	1,960	2,000	2,190
Vietnam	350	360	390	410	430	480
China	740	780	840	890	960	1,100

Note : n.a (not available)

Sources: EPU, MOF, EIU, World Development Indicators 2005

Country	Daily Newspapers per 1000 people 2000	Radios per 1000 people 1997-2003	Television Sets per 1000 people 2003	Telephones per 1000 inhabitans 2002	Mobile Phones per 1000 people 2003	Fax Machines per 1000 people 1999	Personal Computers per 1000 people 2003	Internet Hosts per 10,000 people 2003
13.12 Information Age								
Selected Developed Countries								
Germany	291.0	570.0	675.0	635.0	785.0	79.1	484.7	315.4
Japan	566.0	956.0	785.0	604.0	679.0	127.0	382.2	1,015.7
United Kingdom	326.0	1,445.0	950.0	613.0	841.0	33.9 ^{5f}	405.7	545.3
United States	196.0	2,109.0	938.0	701.0	543.0	78.4	658.9	5,577.8
Australia	161.0	1,996.0	722.0	630.0	719.0	48.6	565.1	1,428.1
NIEs								
Hong Kong	218.0	686.0	504.0	566.0	1,079.0	58.0	422.0	869.3
Singapore	273.0	672.0	303.0	472.0	852.0	25.8	622.0	1,155.3
Rep. Korea	393.0	1,034.0	458.0	457.0	701.0	8.9 ^{5f}	558.0	797.6
Mexico	94.0	330.0	282.0	137.0	291.0	3.0	82.0	130.6
ASEAN 6								
Brunei	71.0 ^{1f}	271.0 ^{3f}	417.0 ^{2f}	263.0 ^{3f}	-	7.0 ^{4f}	74.6 ^{5f}	176.9
Indonesia	23.0	159.0	153.0	34.0	87.0	0.9	11.9	2.9
Malaysia	95.0	420.0	210.0	206.0	442.0	8.1	166.9	42.9
Philippines	67.0	161.0	182.0	46.0	270.0	0.7 ^{4f}	27.7	3.5
Thailand	197.0	235.0	300.0	96.0	394.0	2.5	39.8	16.4
Vietnam	6.0	109.0	197.0	26.0 ^{2f}	34.0	0.4	9.8	0.0
China	59.0	339.0	350.0	138.0	215.0	1.6	27.6	1.3

Notes: ^{1f} Data for 1998^{3f} Data for 1996^{5f} Data for 1999^{2f} Data for 1997^{4f} Data for 1995^{6f} Data for 2001

Sources: World Development Indicators 2005, International Telecommunication Union 2005, World Competitiveness Yearbook 2004, World Telecommunication Development Report 2003

Country	Scientists and Engineers in R&D per Million People 1996-2002	Technicians in R&D per Million People 1996-2002	Total Expenditure on R&D % of GDP 1996-2002	High - Technology Exports US\$ Millions 2003	High - Technology Exports % of Manufactured Exports 2003	Royalty and License Fees Receipts US\$ Millions 2003	Royalty and License Fees Payments US\$ Millions 2003
13.13 Science & Technology							
Selected Developed Countries							
Germany	3,222	1,435	2.5	102,869	16.0	4,262	5,242
Japan	5,085	667 ^{2/}	3.1	105,454	24.0	12,271	11,003
United Kingdom	2,691	1,014 ^{2/}	1.9	64,511	26.0	10,245	7,382
United States	4,526	-	2.7	160,212	31.0	48,227	20,049
Australia	3,446	792 ^{2/}	1.5	2,760	14.0	394	1,268
NIEs							
Hong Kong	1,568	226	0.6	1,845	13.0	196	491
Singapore	4,352	381	2.2	71,421	59.0	197	3,334
Rep. Korea	2,979	564 ^{2/}	2.5	57,161	32.0	1,325	3,597
Mexico	259	184	0.4	28,734	21.0	84	608
ASEAN 5							
Brunei ^{1/}	-	527	0.10	-	-	-	-
Indonesia	-	-	0.04 ^{2/}	4,580	14.0	-	-
Malaysia	294	57	0.7	47,042	58.0	20	782
Philippines	156 ^{2/}	22 ^{2/}	0.08 ^{2/}	23,942	74.0	2	273
Thailand	289	116	0.2	18,203	30.0	7	1,268
China	633	202 ^{2/}	1.2	107,543	27.0	107	3,548

Notes : ^{1/} Data for 1984

^{2/} Data Refer to 1990-2001

Sources: World Development Indicators 2005, World Competitiveness Yearbook 2004

13.14 THE KNOWLEDGE-BASED ECONOMY DEVELOPMENT INDEX (KDI), 2000/2004

Countries / Rank	Computer Infrastructure		Infostructure		Education & Training		R&D and Technology		OVERALL	
	2000	2004	2000	2004	2000	2004	2000	2004	2000	2004
USA	1	1	4	5	9	6	3	2	1	1
Sweden	6	6	1	1	2	4	2	3	2	2
Denmark	7	4	5	6	1	2	9	7	5	3
Japan	14	9	12	14	11	9	1	1	6	4
Finland	4	7	2	12	5	7	5	4	3	5
Norway	3	11	3	2	3	1	12	11	4	6
Switzerland	10	12	10	9	10	8	4	5	7	7
Netherlands	8	2	11	3	14	13	8	10	11	8
United Kingdom	5	3	8	4	12	12	13	13	10	9
Canada	2	8	9	13	7	3	14	14	8	10
Australia	9	10	6	7	6	10	15	15	9	11
Germany	13	5	14	11	13	14	7	8	12	12
Ireland	15	16	16	8	4	5	10	12	13	13
Singapore	12	14	15	10	15	15	6	6	14	14
New Zealand	11	13	13	15	8	11	18	18	15	15
Korea	16	15	7	16	16	17	11	9	16	16
MALAYSIA	17	17	17	17	18	16	17	16	17	17
China	18	18	18	18	19	19	20	19	19	18
Thailand	19	19	20	20	17	18	19	20	18	19
Philippines	21	20	21	19	21	21	16	17	20	20
Indonesia	22	22	19	22	20	20	21	21	21	21
India	20	21	22	21	22	22	22	22	22	22

Note :

The KDI was developed to assess Malaysia's readiness to become a knowledge-based economy. It compares Malaysia's position relative to 21 other countries, which are mainly developed. The KDI is derived from selected key factors required to drive a knowledge-based economy, namely computer infrastructure, infostructure, education and training as well as R&D and technology.



14. Investors' Guide

14.1 Income Tax Rate

Individual 0-28%

Corporate 28%

14.2 Promotion of Investment Act, 1986

Incentives available are Pioneer Status, Investment Tax Allowance, Industrial Adjustment Allowance, Infrastructure Allowance, Double Deduction on Expenses for the Promotion of Exports

14.3 Income Tax Act, 1967

- (i) Exemption of income: The quantum of tax exemption varies. These activities are as follows:
Approved Service Project, Trading Companies, Operational Headquarters, Venture Capital Companies, Tour Operators, Promotion of International Conference, Promotion of Export, Promotion of Car and Motorcycle Racing Events, Promotion of Boat/Yacht Maintenance Activities in Langkawi, Promote the Usage of IT to Improve Business and Management Process
- (ii) Investment Allowance
- (iii) Reinvestment Allowance
- (iv) Double Deduction: Research & Development, Approved Training Institutions & Programmes, Freight Charges, Insurance Premiums, Overseas Promotion, Promotion of Local Brand Name
- (v) Single Deduction
- (vi) Industrial Building Allowance
- (vi) Special Capital Allowance
- (viii) Deduction for Capital Expenditure on Approved Agricultural Projects
- (ix) Special Tax Treatment for Gifts

14.4 Others

Customs Act 1967, Sales Tax Act 1972, Excise Act 1976, Free Zone Act 1990 and Labuan Offshore Business Activity Act (LOBATA) 1990

15. Features of the Foreign Exchange Administration Rules

- Payments between non-residents in general should not be in ringgit. However, payments may be made in ringgit for the sale and purchase of ringgit assets
- Import and export of ringgit by travelers, both residents and non-residents is limited to RM1,000
- Effective from 1 April 2005, residents with foreign currency funds retained either onshore or offshore are freely allowed to invest any amount of their foreign currency funds abroad as well as foreign currency products offered by licensed onshore banks. Residents without domestic borrowing may also convert any amount of their ringgit funds to fund their investments abroad. Residents with domestic borrowing may convert lesser amount of ringgit for the same purpose as follows:
 - ✓ Residents companies, as a corporate group, up to RM10 million per annum
 - ✓ Residents individual up to RM100,000 per annum
- Malaysians travelling abroad require approval to carry on person or in baggage foreign currencies including travellers' cheque in excess of RM10,000 equivalent in aggregate; and
- The exit levy for the repatriation of profits on portfolio investments was abolished since May 2001.